

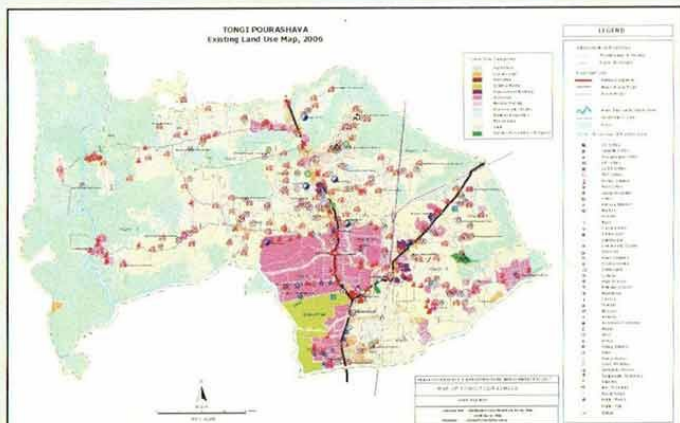
Introduction of Upazila Map

GIS Unit of LGED has completed to develop of Upazila Base Maps at 1:50000 scale for the whole country which comprises of various layers including administrative boundaries, physical infrastructure, educational institutions, settlement pattern and other agriculture and socio-economic infrastructure.

Upazila Map : Geo-Spatial data layers of different thematic features for effective infrastructure planning.

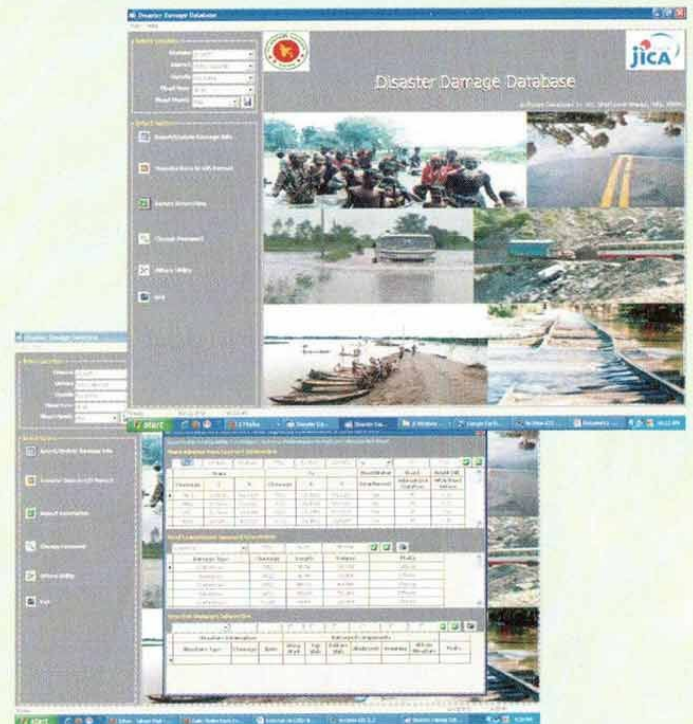


Paurashava Map : Enhance local level participation in decision making process of development activities.



Disaster Damage Database Mapping

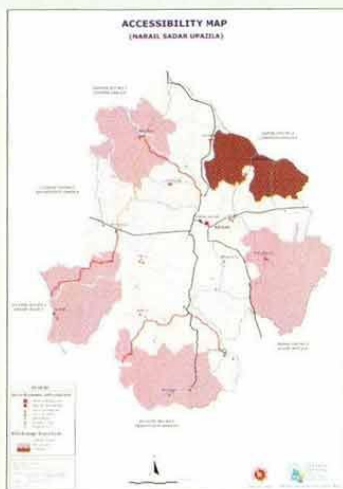
GIS Unit has developed a disaster information database using Disaster Damage Software. Flood damaged infrastructure (road / embankment, bridge/culvert etc.) data and picture are collected with the help of field staff (project started since 2008). Using disaster database and GIS Software Disaster Damage Map is developed.



PUBLICATION LIST

GIS unit has a number of digital maps of Bangladesh in its archive. The major type maps are:

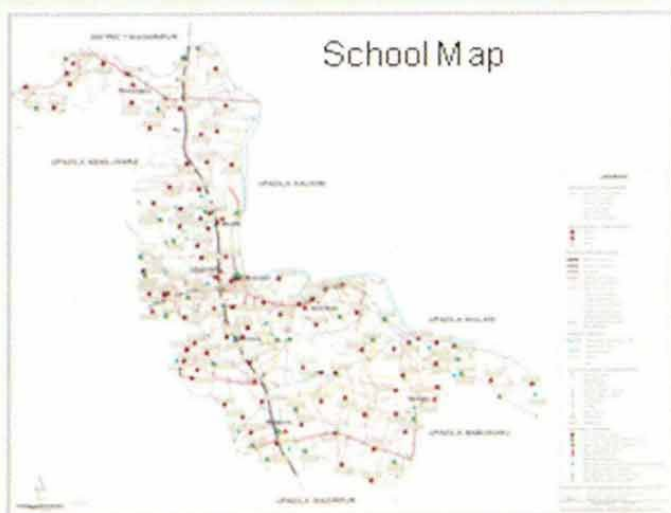
- Upazila Map (Both Format)
- District Map (Digital Format)
- Road Network Map (Digital Format)
- School Map (Digital Format)
- Municipality Map (Digital Format)



Accessibility Map :

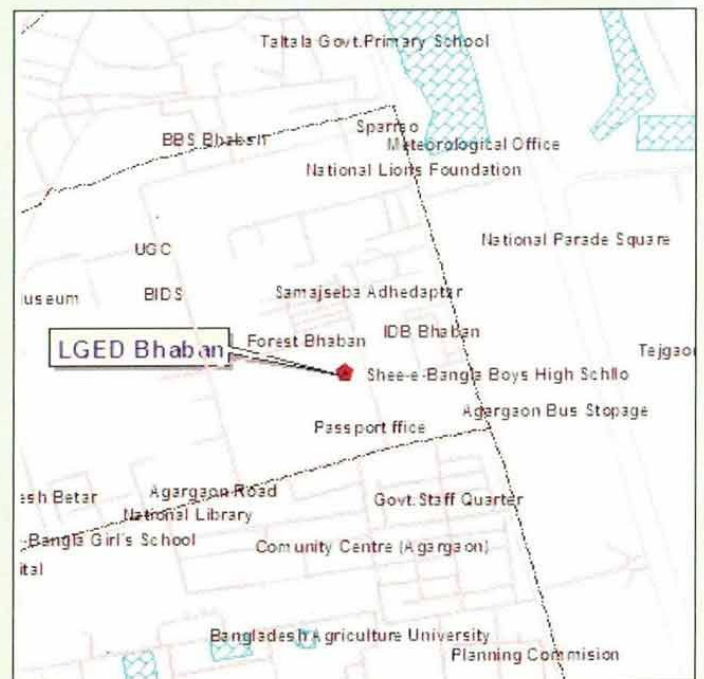
Influence communities for their exposure to economic and social opportunities.

School Map : Help planning for school infrastructure development



RESOURCES IN GIS UNIT

GIS unit is well equipped with latest hardware and software facilities. It has skilled technical manpower.

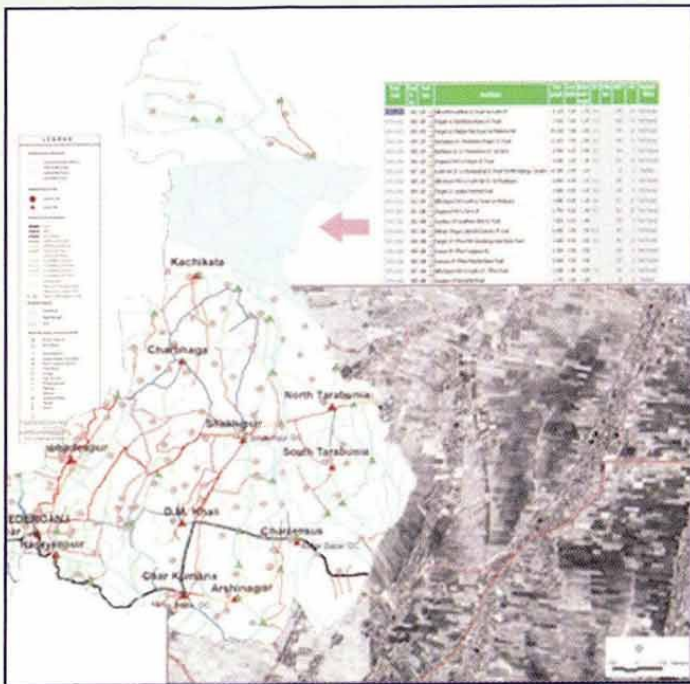


Contact Address

GIS Unit, Level 04, LGED Bhaban, Agargaon, Sher-e-Bangla Nagar, Dhaka-1207, Bangladesh
Tel: 02-8112126

Website: www.lged.gov.bd

GIS UNIT



*Think Spatially for
Precise Planning...*

**LOCAL GOVERNMENT
ENGINEERING DEPARTMENT (LGED)**

About GIS UNIT, LGED

Local Government Engineering Department (LGED) is entrusted with physical infrastructure development in rural and semi-urban areas of Bangladesh. It has successfully established a GIS set-up in its headquarter since 1992. The aim of GIS unit is to establish a comprehensive local level infrastructure database for planning, monitoring and implementing development activities especially in rural areas. The main strength behind successful establishment of GIS Unit in LGED is the organizational commitment to this technology.

MAJOR GIS APPLICATION AREAS

The major application areas of GIS in infrastructure development activities under LGED can be summarized as follows :

- Rural Accessibility and Transport Planning
- Prioritization and selection of development schemes
- GIS based infrastructure development project monitoring system
- Local level disaster management
- Environmental Impact Assessment of infrastructure development schemes.
- Mapping of Infrastructure concern