

**Government of the People's Republic of Bangladesh  
Ministry of Local Government, Rural Development and Cooperatives  
Local Government Division  
Local Government Engineering Department (LGED)**

**Second Urban Governance & Infrastructure Improvement (Sector)  
Project (UGIIP-II)  
ADB Loan No. 2462-BAN (SF)**



# **Social, Environmental & Indigenous Peoples Safeguards**

## **Annual Report - 2013**

Prepared by:

**MDS Consultants**

Joint Venture of



STUP Consultants P. Ltd.



Operations Research Group Pvt. Ltd.



Development Design Consultants Ltd.

In association with

Sodev Consult

SARM Associates Ltd.

Design Planning & Management Consultants

## Abbreviations

---

|          |  |
|----------|--|
| ADB      | Asian Development Bank   |
| AP       | Affected Person  |
| BDT      | Bangladeshi Taka   |
| DoE      | Directorate of Environment                                     |
| EA       | Executing Agency   |
| EARF     | <i>Environmental assessment and review framework</i>           |
| GoB      | Government of Bangladesh                                       |
| GRC      | Grievance Redress Committee                                    |
| IEE      | Initial environmental examination                              |
| IOL      | Inventory of Losses  |
| IR       | Involuntary Resettlement                                       |
| LGED     | Local Government Engineering Department                        |
| MDS      | Management Design & Supervision Consultants                    |
| NGO      | Non-Government organization                                    |
| NRS      | National Resettlement Specialist                               |
| OM       | Operation Manual   |
| PDP      | Pourashava Development Plan                                    |
| PIB      | Project Information Booklet                                    |
| PIU      | Project Implementation Unit                                    |
| PMO      | Project Management Office,                                     |
| REA      | Rapid Environment Assessment                                   |
| RF       | Resettlement Framework   |
| RP       | Resettlement Plan  |
| RRS      | Regional Resettlement Specialist                               |
| RES      | Regional Environment Specialist                                |
| SSA      | Social Safeguard Assessment                                    |
| TA       | Technical Assistance   |
| UGIIP-II | Second Urban Governance and Infrastructure Improvement Project |

# CONTENTS

## EXECUTIVE SUMMARY

i-iv

### Page No.

|  |    |
|--|----|
| 1. INTRODUCTION                                      | 1  |
| 2. PROJECT OBJECTIVE & THE SAFEGUARDS                | 2  |
| 3. PROJECT SAFEGUARD TEAM                            | 4  |
| 4. STATUS OF SAFEGUARD REPORTS                       | 5  |
| 5. LAND ACQUISITION                                  | 7  |
| 6. SAFEGUARD MONITORING                              | 10 |
| 7. COMPLIANCE OF INDIGENOUS PEOPLES SAFEGUARD (IPDP) | 12 |
| 8. LOAN COVENANTS COMPLIANCE                         | 14 |

## APPENDICES

16

|  |    |
|--|----|
| Summary Status of Safeguard Assessment Reports (As on December,2013)<br>UGIIP-II Phase 2 | 17 |
|--|----|

|  |    |
|--|----|
| Summary Status of Safeguard Assessment Reports (As on December,2013)<br>UGIIP-II Phase 3 | 18 |
|--|----|

|                   |    |
|-------------------|----|
| Social Safeguards | 19 |
|-------------------|----|

|                          |    |
|--------------------------|----|
| Environmental Safeguards | 38 |
|--------------------------|----|

|                     |    |
|---------------------|----|
| <b>Photo plates</b> | 50 |
|---------------------|----|

## EXECUTIVE SUMMARY

The Government of Bangladesh (GOB) has undertaken the Second Urban Governance and Infrastructure Improvement (Sector) Project (UGIIP-II) with financial assistance from the Asian Development Bank (ADB) (Loan No. 2462 BAN (SF) together with co-financing from KfW and GIZ to improve governance and urban service provision initially in 35 pourashavas in Phase-2 and later extended to cover 47 pourashavas in Phase-3 from July, 2012 of the Project.

The overall objective of the Project includes construction, rehabilitation, expansion and implementation of subprojects of essential existing infrastructure and utility facilities for the urban sector of Bangladesh and to develop a well structured augmentation/rehabilitation program and implement in according to prioritization.

Under the TA project for UGIIP-II, the resettlement framework (RF) and Environmental assessment and review framework (EARF) were prepared and the same were endorsed by both the funding agencies and GoB to be adopted for implementation of the UGIIP-II project. The frameworks specified the screening procedures and the guidelines for identifying the APs, estimating the compensation and assistance to be paid for the losses, grievances redress mechanism, preparation of IEE, EIA and the institutional requirements for monitoring the implementation of social and environmental safeguard aspects of the project.

Variety of subprojects have been undertaken under UGIIP-II, potential environmental impacts of a local nature can be expected and cover a wide spectrum. Accordingly, the criteria for selection or exclusion of subprojects address concerns related to potential significant or irreversible negative environmental impacts.

The law by the Government of Bangladesh (GOB) and ADB policy require that the social and environmental impacts of development projects be identified and assessed as part of the planning and design process, and action be taken to reduce those impacts to acceptable levels. This is done through the screening/impact assessment process, which has become an integral part of all ADB lending operations, project development and implementation.

The project has been classified as environment 'Category B' as per criteria in the Environment Policy<sup>1</sup> of the ADB and Environmental Assessment Guidelines (November 2002) as applied by the ADB Urban Development Division, South Asia Department. Category B projects are "judged to have some adverse environmental impacts, but of lesser degree and/or significance than those for category A projects." As a result an "initial environmental examination (IEE) is required to determine whether or not significant environmental impacts warranting an EIA are likely."<sup>2</sup>

As per DoE, GOB, most of the subprojects under UGIIP-II have been categorised as Orange-A and Orange-B. Water treatment plants, water distribution line laying/relaying/extension, landfill/dumping ground, and bus and truck terminals are in Red Category.

---

<sup>1</sup> ADB, Technical Assistance Report *Preparing the Second Urban Governance and Infrastructure Improvement (Sector) Project*, November 2006, Manila.

<sup>2</sup> Asian Development Bank, Environmental Assessment Guidelines, 2003.

DoE has issued an Environment Clearance Certificate for UGIIP-II subprojects which fall under Orange A and Orange B Categories vide letter DOE/clearance/5025/2010/375 dated 11/11/2010. Accordingly, only Red Category subprojects require the Environmental Assessment process including EIA for Environmental Clearance.

Considering all the above, following steps were adopted by the MDS Project Consultant's team for Environmental Safeguard compliance –

1. Review of the available Environmental safeguard documents and categorisation of the project as per ADB and GOB guidelines.
2. Separate Consultation with MDS team members, PMO staffs and PIU staffs to explain the importance of the safeguards.
3. Separate Workshop on safeguard policies for all Municipal Engineers, Executive Engineer and Assistant Engineer of all the Pourashavas under UGIIP-II
4. Screening and re-categorisation of each and every scheme with the help of REA checklist transect walk and public consultation for individual schemes during visit to individual project scheme sites.
5. Preparation of sector subproject IEE for each sector subproject for each Pourashava.
6. Preparation of TOR for conducting EIA to get environmental clearance from DoE, GoB for Red category projects

Similarly for the social impacts, each subproject is screened to assess the likely impacts, categorised as either 'Category B' or 'Category C'<sup>3</sup> and depending on the requirement a short Resettlement Plan (SRP) is prepared to address the negative impacts as per the approved Resettlement Framework. It has been observed in a large number of subprojects that the impacts are limited to removal of a few trees, temporary/permanent boundary walls, shifting of business activities during the construction period and the like. Subsequent to identification of the impacts through the screening exercise, socio-economic surveys of the affected persons have been conducted to address the negative impacts and the costs towards compensation as well as other assistances have been estimated in the short RP. Because of the priority need for the proposed subprojects, there have been instances where the local community have been forthcoming in voluntarily removing the structure/assets to facilitate their implementation. In such cases, written consent of the affected person(s)/ local community and the respective pourashava officials have been documented. Where necessary, the SSA reports also included Short Resettlement Plans (SRPs) that identified the APs and the compensation/assistance to be paid to the APs. Up to December 2013 total compensation paid under this project is BDT 33,516.00. This money has been paid mostly for shifting/removal of trees, tea stall, shops etc from the project alignments.

Land acquisition too has been required in a few subprojects, however, these have been processed through the standard land acquisition process i.e. after obtaining approval from Ministry, the PMO has disbursed the compensation amount decided by DC office for the proposals made by the Pourashava. Out of 47 Pourashavas under UGIIP-II, 14 have submitted proposal to PMO for land acquisition under solid waste management component

---

<sup>3</sup> As a policy matter Category A subproject that are likely to impact more than 200 PAPs are not to be included under UGIIP 2 Program.

to develop dumping place / land fill site and construction of Bus Terminal (Municipal Facilities). Till December 2013 land acquisition activities of 7 out of the above 14 pourashavas have been completed and total amount paid by the PMO for this purpose amounts to BDT 140 Million.

The safeguard team of UGIIP-II comprises of International Resettlement and Environment Specialists in addition to the National Specialists all stationed at Dhaka.

Sector wise proposals for 3rd Phase subprojects are already submitted to PMO but at present PMO is approving the additional proposals for the Pourashavas which are at various stages of finalization. The Resettlement Specialists & Environment specialists are in the process of preparing the SSA /IEE reports for the finalized subproject proposals.

Monitoring of the safeguard aspects is regularly carried out by the UGIIP-II safeguard team by undertaking field visits and monthly/quarterly progress reports are being submitted to PMO.

**SUMMARY STATUS OF SAFEGUARD REPORTS**  
**UGIIP-II Phase-2**

| Sector                 | Total Pkgs. | Status Up to Dec 2012 |             |             | Remarks  |
|------------------------|-------------|-----------------------|-------------|-------------|--|
|                        |             | SSA & RP Reports      | IEE Reports | EIA Reports |  |
| Urban Transport        | 213         | 213                   | 213         |             | No new proposal under Phase II was proposed during the year. |
| Water Supply           | 10          | 10                    | 10          | 4           |  |
| Solid Waste Management | 21          | 21                    | 21          |             |  |
| Drainage               | 55          | 55                    | 55          |             |  |
| Sanitation             | 21          | 21                    | 21          |             | DoE clearance was obtained for WS schemes in 4 Pourashavas.  |
| Municipal Facilities   | 40          | 40                    | 40          |             |  |
| <b>Total</b>           | <b>360</b>  | <b>360</b>            | <b>360</b>  | <b>4</b>    |  |

**SUMMARY STATUS OF SOCIAL SAFEGUARD ASSESSMENT REPORTS**  
**UGIIP-II Phase- 3 (During the Year 2013)**

| Sector                 | Total Pkgs. Ready | Submitted Up to Dec 2012 | Progress During Year 2013 |           |          |          | Cum. till Dec 2013 |
|------------------------|-------------------|--------------------------|---------------------------|-----------|----------|----------|--------------------|
|                        |                   |                          | Q1                        | Q2        | Q3       | Q4       |                    |
| Urban Transport        | 82                | 35                       | 23                        | 6         | 16       | 2        | 82                 |
| Water Supply           |                   |                          |                           |           |          |          |                    |
| Solid Waste Management |                   |                          |                           |           |          |          |                    |
| Drainage               | 5                 | 0                        |                           | 3         | 1        |          | 4                  |
| Sanitation             |                   |                          |                           |           |          |          |                    |
| Municipal Facilities   | 6                 | 0                        |                           | 2         |          | 1        | 3                  |
| <b>Total</b>           | <b>93</b>         | <b>35</b>                | <b>23</b>                 | <b>11</b> | <b>1</b> | <b>1</b> | <b>89</b>          |

**SUMMARY STATUS OF INITIAL ENVIRONMENTAL EXAMINATION REPORTS**  
**UGIIP-II Phase - 3 (During the Year 2013)**

| Sector                 | Total Pkgs. Ready | Submitted Up to Dec 2012 | Progress During Year 2013 |           |           |          | Cum. till Dec 2013 |
|------------------------|-------------------|--------------------------|---------------------------|-----------|-----------|----------|--------------------|
|                        |                   |                          | Q1                        | Q2        | Q3        | Q4       |                    |
| Urban Transport        | 82                | 37                       | 17                        | 8         | 18        | 2        | 82                 |
| Water Supply           |                   |                          |                           |           |           |          | -                  |
| Solid Waste Management |                   |                          |                           |           |           |          | -                  |
| Drainage               | 5                 | 0                        | 0                         | 3         | 1         |          | 4                  |
| Sanitation             |                   |                          |                           |           |           |          | -                  |
| Municipal Facilities   | 6                 | 0                        | 0                         | 2         |           | 1        | 3                  |
| <b>Total</b>           | <b>93</b>         | <b>37</b>                | <b>17</b>                 | <b>13</b> | <b>19</b> | <b>3</b> | <b>89</b>          |

### **Environmental Clearance from DoE**

In addition to the IEE reports, detailed EIA reports were prepared for water supply subprojects in 4 pourashavas during Phase II and NOCs were obtained for projects subsequent to presentations made to DoE.

For projects during Phase III, MDS consultants have made presentation to DoE for the proposed bus terminals at Bhanga and Patgram Pourashava. As per instructions from DoE, environmental surveys have been conducted to collect baseline data covering ambient air quality, noise, water quality (both surface and ground water) and soil at the proposed bus terminal sites in both the Pourashava and detailed EIA reports are under preparation.

### **Monthly and Quarterly Progress Reports**

The monthly monitoring reports and Quarterly Progress Reports are being prepared by the safeguard team and submitted regularly to the PMO.

# 1.

## INTRODUCTION

---

The Government of Bangladesh (GOB) has undertaken the Second Urban Governance and Infrastructure Improvement (Sector) Project (UGIIP-II) with financial assistance from the Asian Development Bank (ADB) (Loan No. 2462 BAN (SF) together with co-financing from KfW; and GIZ to improve governance and urban service provision in 35 municipalities. These municipalities include: Sunamganj, Srimangal and Golapganj in Sylhet Division; Sreepur, Mirzapur, Ghorashal, Munshiganj, Jamalpur, Mymensingh, Bhanga, Faridpur in Dhaka Division; Brahmanbaria, Comilla, Chandpur, Parshuram, Noakhali, Chowmuhani, and Cox's Bazar in Chittagong Division; Jhenaidah, Narail, Benapole, Satkhira, and Bagerhat in Khulna Division, Thakurgaon, Kurigram, Rangpur, Dinajpur, Nachol, Sirajganj, Nator and Gaibandha in Rajshahi Division; and Jhalakati, Bhola, Barguna and Kolapara in Barisal Division.

In 3rd phase, 4 Pourashavas are dropped from the original program based on their performance in phase-2 and due to change of status of some Pourashava those are Rangpur and Dinajpur Pourashava in Rangpur Division, Comilla in Chittagong Division and Bagerhat in Khulna Division. Moreover 16 (Sixteen) new Pourashavas are included in the project program. These Pourashavas are: Dhanbari, Gopalganj, Madaripur, Madhabpur, Kakanhat, Pabna, Nilfamari, Patgram, Kushtia, Chuadanga, Bandarban, Haziganj, Basurhat, Khagrachari, Lalmohan and Patuakhali. So, Phase-3 now includes a total of 47 Pourashavas all over the country.

Out of 47 Pourashavas, ADB finances the following 35 Pourashavs:

Sunamganj, Srimangal, Golapganj, Bhanga, Brahmanbaria, Comilla, Chandpur, Parshuram, Noakhali, Chowmuhani, Jhenaidah, Narail, Benapole, Satkhira, Nachol, Jhalakati, Bhola, Barguna, Kolapara, Ghorashal, Munshiganj, Dhanbari, Gopalganj, Madaripur, Madhabpur, Kakanhat, Pabna, Kushtia, Chuadanga, Bandarban, Haziganj, Basurhat, Khagrachari, Lalmohan and Patuakhali.

The remaining 12 following Pourashavas are funded by KfW:

Sreepur, Mirzapur, Jamalpur, Mymensingh, Faridpur, Thakurgaon, Kurigram, Sirajganj, Natore, Gaibandha, Nilphamari and Patgram.

This Annual Report for the year 2013 presents Social and Environmental Safeguard issues and related aspects in the project viz. status of social and environmental project screening, preparation of SSA and IEE reports, SRP and EIA reports, progress monitoring etc.



## 2. PROJECT OBJECTIVE & THE SAFEGUARDS

---

The overall objective of the project includes construction, rehabilitation, expansion and implementation of subprojects of essential existing infrastructure and utility facilities for the urban sector of Bangladesh and to develop a well structured augmentation/rehabilitation program and implement in according to prioritization.

Under the TA project for UGIIP-II, the resettlement framework (RF) and *Environmental assessment and review framework (EARF)* were prepared and the same were endorsed by both the funding agencies and GoB has been adopted for implementation of the UGIIP-II project. The frameworks specified the screening procedures and the guidelines for identifying the APs, estimating the compensation and assistance to be paid for the losses, grievances redress mechanism, preparation of IEE, EIA and the institutional requirements for monitoring the implementation of social and environmental safeguard aspects of the project.

Variety of subprojects have been undertaken under UGIIP-2, potential environmental impacts of a local nature can be expected and cover a wide spectrum. Accordingly, the criteria for selection or exclusion of subprojects address concerns related to potential significant or irreversible negative environmental impacts.

Potential social and environmental impacts stem from poor or improper location, planning and design practice. Construction impacts in a local setting and within the local community can be significant, even though of short duration and limited extent.

The law by the Government of Bangladesh (GoB) and ADB policy require that the social and environmental impacts of development projects be identified and assessed as part of the planning and design process, and action be taken to reduce those impacts to acceptable levels. This is done through the screening/impact assessment process, which has become an integral part of all ADB lending operations, project development and implementation.

The project has been classified as environment 'Category B' as per criteria in the Environment Policy<sup>4</sup> of the ADB and Environmental Assessment Guidelines (November 2002) as applied by the ADB Urban Development Division, South Asia Department. Category B projects are "judged to have some adverse environmental impacts, but of lesser degree and/or significance than those for category A projects." As a result an "initial environmental examination (IEE) is required to determine whether or not significant environmental impacts warranting an EIA are likely."

As per DOE, GOB, most of the subprojects under UGIIP-II have been categorised as Orange-A and Orange-B. Water treatment plants, water distribution line laying/relaying/extension, landfill/dumping ground, and bus and truck terminals are in Red Category.

---

<sup>4</sup> ADB, Technical Assistance Report *Preparing the Second Urban Governance and Infrastructure Improvement (Sector) Project*, November 2006, Manila.

DOE has issued an Environment Clearance Certificate for UGIIP-II subprojects which fall under Orange A and Orange B Categories vide letter DOE/clearance/5025/2010/375 dated 11/11/2010. Accordingly, only Red Category subprojects require the Environmental Assessment process including EIA for Environmental Clearance.

Considering all the above, following steps were adopted by the MDS Consultant's team for Environmental Safeguard compliance –

1. Review of the available Environmental safeguard documents and categorisation of the project as per ADB and GOB guidelines.
2. Separate Consultation with MDS team members, PMO staffs and PIU staffs to explain the importance of the safeguards.
3. Separate Workshop on safeguard policies for all Municipal Engineers, EE and AE of all the Pourashavas under UGIIP-II
4. Screening and re-categorisation of each and every scheme with the help of REA checklist, transect walk and public consultation for individual schemes during visit to individual project scheme sites.
5. Preparation of sector subproject IEE for each sector subproject for each Pourashava.
6. Preparation of TOR for conducting EIA to get environmental clearance from DOE, GOB for Red category projects.

Similarly for the social impacts, each subproject is screened to assess the likely impacts, categorised as either 'Category B' or 'Category C'<sup>5</sup> and depending on the requirement a short Resettlement Plan (SRP) is prepared to address the negative impacts as per the approved Resettlement Framework. It has been observed in a large number of subprojects that the impacts are limited to removal of a few trees, temporary/permanent boundary walls, shifting of business activities during the construction period and the like. Subsequent to identification of the impacts through the screening exercise, socio-economic surveys of the affected persons have been conducted to address the negative impacts and the costs towards compensation as well as other assistances have been estimated in the short RP. Because of the priority need for the proposed subprojects, there have been instances where the local community have been forthcoming in voluntarily removing the structure/assets to facilitate implementation by the project activities. In such cases, written consent of the affected person(s)/ local community and the respective pourashava officials have been documented.

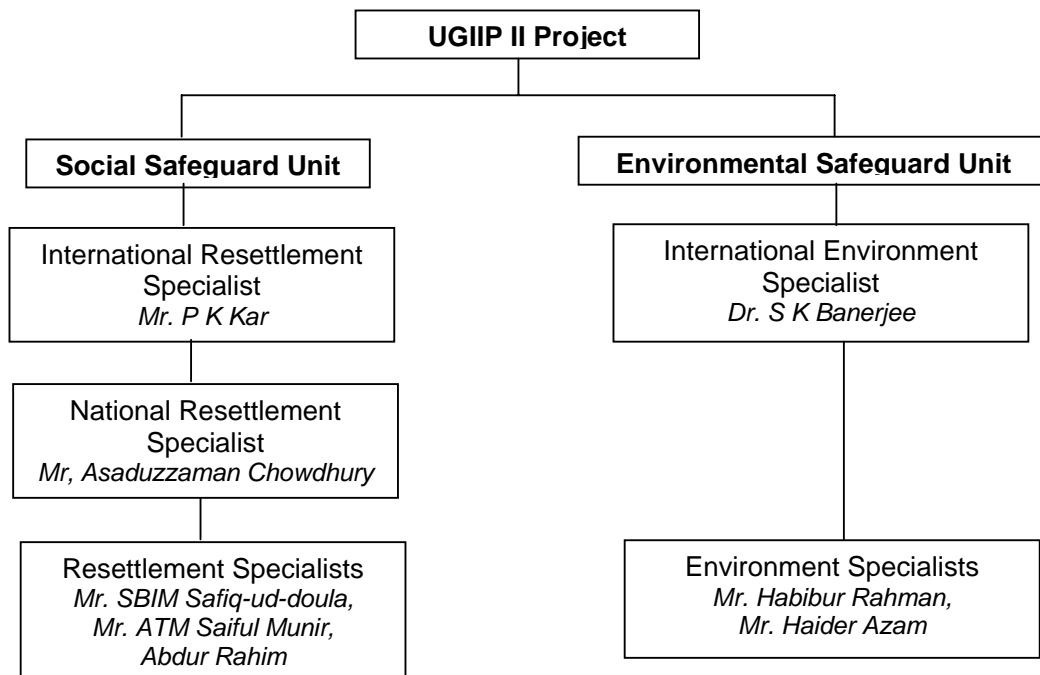
---

<sup>5</sup> As a policy matter Category A subproject that are likely to impact more than 200 PAPs are not to be included under UGIIP 2 Program.

### 3. PROJECT SAFEGUARD TEAM

---

The safeguard team of UGIIP-II comprises of International Resettlement and Environment Specialists in addition to the National Specialists all stationed at Dhaka. Presently the team consists of Mr. SBIM Safiq-ud-doula, Mr. ATM Saiful Munir and Abdur Rahim as Resettlement specialists and Mr. Asaduzzaman Chowdhury and Mr. P.K.Kar as national and International Resettlement specialists respectively. Environment team consists of Mr. Habibur Rahman and Mr. Haider Azam as Environment specialists. Dr. Samar Kumar Banerjee is an International Environment specialist in the team.



## 4. STATUS OF SAFEGUARD REPORTS

Safeguard reports are being submitted along with the technical reports of the subprojects to PMO for onward submission to KfW and ADB. Social Safeguard Assessment Reports (SSA) and Initial Environmental Examination (IEE) Reports have been submitted to the PMO for all the 360 Packages under UGIIP-II Phase-2, sector wise totalling to 213 nos., 10 nos., 21 nos., 55 nos., 21 nos. and 40nos. for Urban Transport, Water Supply, Solid Waste Management, Drainage, Sanitation and Municipal Facility respectively.

The following tables present the status of submission of SSA and IEE Reports for Phase-2 and Phase 3 subprojects. It may be noted that in Phase-3 only subprojects belonging to urban transport, drain and municipal facility sectors have been taken up for implementation Till December 2013, SSA and IEE reports have been prepared and submitted to PMO for 89 out of the 93 packages finalized.

To obtain environmental clearance for the 'Red' category projects, 4 EIA reports were prepared for the Phase-2 subprojects, while 1 EIA has been prepared for Phase-3 subprojects. Subsequent to presentation made to DoE by the safeguard team, environmental clearance has been already obtained for the 'Red' category subprojects under Phase-2 while the safeguard team is working on EIA for the additional requirements specified by DoE for the Phase-3 subprojects.

### **STATUS OF SAFEGUARD REPORTS- UGIIP-II Phase-2**

| Sector                 | Total Pkgs. | Status Up to Dec 2012 |             |             | Remarks  |
|------------------------|-------------|-----------------------|-------------|-------------|--|
|                        |             | SSA & RP Reports      | IEE Reports | EIA Reports |  |
| Urban Transport        | 213         | 213                   | 213         |             | No new proposal has been proposed under Phase-2 during the year. |
| Water Supply           | 10          | 10                    | 10          | 4           |  |
| Solid Waste Management | 21          | 21                    | 21          |             |  |
| Drainage               | 55          | 55                    | 55          |             |  |
| Sanitation             | 21          | 21                    | 21          |             | DoE clearance was obtained for WS schemes in 4 Pourashavas.      |
| Municipal Facilities   | 40          | 40                    | 40          |             |  |
| <b>Total</b>           | <b>360</b>  | <b>360</b>            | <b>360</b>  | <b>4</b>    |  |

### **STATUS OF SOCIAL SAFEGUARD ASSESSMENT REPORTS - UGIIP-II Phase- 3** **(During the Year 2013)**

| Sector                 | Total Pkgs. Ready | Submitted Up to Dec 2012 | Progress During Year 2013 |           |          |          | Cum. Progress till Dec 2013 |
|------------------------|-------------------|--------------------------|---------------------------|-----------|----------|----------|-----------------------------|
|                        |                   |                          | Q1                        | Q2        | Q3       | Q4       |                             |
| Urban Transport        | 82                | 35                       | 23                        | 6         | 16       | 2        | 82                          |
| Water Supply           |                   |                          |                           |           |          |          |                             |
| Solid Waste Management |                   |                          |                           |           |          |          |                             |
| Drainage               | 5                 | 0                        |                           | 3         | 1        |          | 4                           |
| Sanitation             |                   |                          |                           |           |          |          |                             |
| Municipal Facilities   | 6                 | 0                        |                           | 2         |          | 1        | 3                           |
| <b>Total</b>           | <b>93</b>         | <b>35</b>                | <b>23</b>                 | <b>11</b> | <b>1</b> | <b>1</b> | <b>89</b>                   |

**STATUS OF INITIAL ENVIRONMENTAL EXAMINATION REPORTS- UGIIP-II Phase - 3**  
**(During the Year 2013)**

| Sector                 | Total Pkgs. Ready | Submitted Up to Dec 2012 | Progress During Year 2013 |           |           |          | Cum. progress till Dec 2013 |
|------------------------|-------------------|--------------------------|---------------------------|-----------|-----------|----------|-----------------------------|
|                        |                   |                          | Q1                        | Q2        | Q3        | Q4       |                             |
| Urban Transport        | 82                | 37                       | 17                        | 8         | 18        | 2        | 82                          |
| Water Supply           |                   |                          |                           |           |           |          | -                           |
| Solid Waste Management |                   |                          |                           |           |           |          | -                           |
| Drainage               | 5                 | 0                        | 0                         | 3         | 1         |          | 4                           |
| Sanitation             |                   |                          |                           |           |           |          | -                           |
| Municipal Facilities   | 6                 | 0                        | 0                         | 2         |           | 1        | 3                           |
| <b>Total</b>           | <b>93</b>         | <b>37</b>                | <b>17</b>                 | <b>13</b> | <b>19</b> | <b>3</b> | <b>89</b>                   |

In addition to the IEE reports, detailed EIA reports were prepared for water supply subprojects in 4 pourashavas, presentations were made to Deptt. of Environment, Govt. of Bangladesh and NOCs were obtained for the proposed water supply projects during Phase II of the UGIIP-II project.

Under UGIIP-II Phase-3, Patgram and Bhanga pourashava have proposed bus terminals for which presentations to DoE, Govt. of Bangladesh were made for approval of the detailed terms of reference. Environmental surveys have been carried out at the proposed sites to establish baseline monitoring parameters. The detailed EIA reports to obtain NOC from DoE are under preparation by the safeguard team.

## 5. LAND ACQUISITION

In order to minimize land acquisition and resettlement, UGIIP-II has adopted the following measures for compliance by the Pourashavas:

- Utilization of existing lands for the rehabilitation of public markets, upgrading of low-income communities, water supply and distribution, and town center development;
- Community consensus on the location of sanitary latrines and deep wells;
- Realignment of rights-of-way for community roads and bridges to achieve minimum impacts on houses and structures;
- Vacant Pourashava lands will be utilized for solid waste management that will not pose health hazards to human settlements.

The Local Land Registration Office (LLRO) under the Office of the Deputy Commissioner has assisted in verifying the status of ownership on lands to be acquired following the request from the PMO. The ownership can be ascertained with the use of cadastral maps that show the subproject area boundaries marked on lots that would be affected. The LLRO identified the Affected Persons who have holding numbers, those whose applications are being processed in their office, and those who have lease-agreement with any government agency and/or legitimate land ownerships. Such assistance will be very useful for PIUs in knowing the APs that shall receive compensation for the land.

Up to December 31, 2013 status of Land Acquisition are as follows-

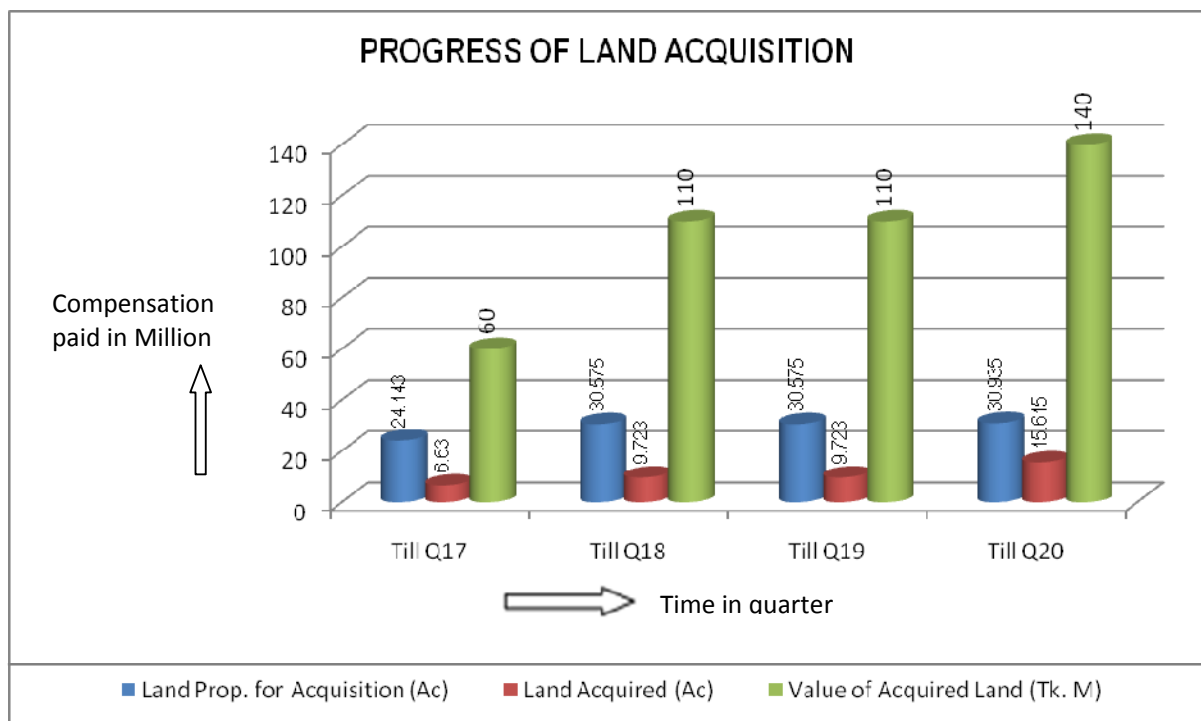
- Total Proposed Land up to December 31, 2013 = 30.935 Acres,
- Acquired land up to December, 2013 = 15.615 acre's for 07 pourashavas out of 14 pourashava who intended land acquisition for waste disposal and bus terminal sites.
- Among the 7 Pourashavas where land has been acquired, 5 Pourashavas have made payment fully (Faridpur, Bhanga, Sathkhira, Sreemongal, Patgram). The remaining two Pourashavas (Chowmuhan and Ghorashal) have given partial payment

| Sl. No | Name of Pourashava | Proposed Land (Acre) | Status as of Dec 2013  | Land Value including other actual costs (BDT) | Remarks  |
|--------|--------------------|----------------------|--|---|--|
| 1      | Faridpur           | 3.000                | DC office has estimated land value and other costs. PMO has paid the full amount to the pourashava | 3,49,70,334.26                                | Paid to DC   |
| 2      | Bhanga             | 2.000                | DC office has estimated land value and other costs. PMO has paid the full amount to the pourashava | 2,68,23,495.00                                | Paid to DC   |
| 3      | Mirzapur           | 1.580                | DC office has estimated land value (TK.5,52,85,454.52) with other costs.                           | 5,52,85,454.52                                | Estimated Cost submitted to PMO on 27.6.2013. Payment to pourashava is pending |
| 4      | Benapole           | 1.810                | Pourashava has submitted land value certificate from Sub-registrar office to PMO.                  | 1,33,00,526.00                                | PS submitted the valuation certificate to PMO on 08.01.2014                    |

| Sl. No       | Name of Pourashava | Proposed Land (Acre) | Status as of Dec 2013   | Land Value including other actual costs (BDT) | Remarks  |
|--------------|--------------------|----------------------|---|---|--|
| 5            | Narail             | 1.750                | Pourashava has submitted documents to DC office after getting administrative approval from Local Government Division  |   | Need for No Objection Certificate (NOC) from DoE.  |
| 6            | Satkhira           | 1.630                | DC office has estimated land value and other costs. PMO has paid the full amount to the pourashava  | 15,14,681.09                                  | Paid to DC   |
| 7            | Bagerhat           | 2.000                | DC office has estimated land value (TK. 97,21,260.00) with other costs.   | 97,21,260.00                                  | Pourashava Submitted estimate to PMO on 21.06.2012.  |
| 8            | Kurigram           | 2.000                | Local MP has suggested for acquisition of the land under 1 <sup>st</sup> proposal submitted by Pourashava   |   | Pourashava trying to acquire the land under 1 <sup>st</sup> proposal.                      |
| 9            | Nachole            | 3.710                | Administrative approval obtained from Local Government Division   |   | Pourashava has submitted documents to DC office for further action on 11.11.2013           |
| 10           | Ghorashal          | 2.540                | DC office has estimated land value (4,43,01,065.51) and Pourashava has submitted proposal to PMO on 13.6.2013   | 2,48,80,385.17 paid to the pourashava         | Balance amount TK. 1, 94, 20,680.34 (Tk 4,43,01,065.51 less TK. 2,48,80,385.17) is pending |
| 11           | Sreemongal         | 2.438                | DC office has estimated land value (TK.1,91,71,367.00) with other costs and Pourashava. submitted proposal to PMO   | 1,91,71,367.00                                | Paid to DC   |
| 12           | Chowmuhoni         | 2.285                | DC office has estimated land value with other costs and PMO paid partial payment of TK. 2,75,20,123.59 against the demanded TK. 3,67,21,763.00                    | 2,75,20,123.59 paid to the pourashava         | Balance amount Tk. 92,01,639.41 (Tk 3,67,21,763.00 less TK 2,75,20,123.59.) is pending     |
| 13           | Cox'sbazar         | 2.470                | 1 <sup>st</sup> proposal found unsuitable being nearer to airport. New proposal submitted to Local Government Division for administrative approval on 12.02.2013. |   | Administrative approval awaited.   |
| 14           | Patgram            | 1.722                | DC office has estimated land value (TK.51, 19,614.83) with other costs and PMO paid the said full payment to pourashava.  | 51,19,614.83                                  | Paid to DC   |
| <b>Total</b> |                    | <b>30.935</b>        | <b>Total Paid to 7 Pourashavas</b>  | <b>14,000000.00</b>                           |  |

The table above shows that 14 out of 47 Pourashavas have submitted proposal to Project Management Office (PMO) for land acquisition to construct dumping ground and Bus Terminals (Bus Terminal-Patgram Pourashava). The land acquisition activities of 7 out of the 14 pourashavas (Faridpur, Bhanga, Satkhira, Sreemongal, Chowmuhani, Patgram, Ghorashal) have been completed. Total proposed land for acquisition in 14 Pourashavas is 30.935 Acre's. **Total acquired land till December 2013 is 15.615 acre's which includes payment of TK. 14, 00, 00,000.00 out of the fixation value of TK. 16, 86,22,320.69 to 7 number Pourashavas.**

Narail Pourashava needs "No Objection Certificate (NOC)" from Directorate of Environment for the site selected for the dumping ground. In case of Kurigram pourashava, the local MP has suggested for acquisition of the land under 1st proposal submitted by Pourashava and efforts are on by the pourashava to acquire the same. Nachole Pourashava got the administrative approval from LGD and DC office has already started all procedures for land acquisition. In Cox's Bazaar Pourashava, the 1<sup>st</sup> proposal was cancelled for being nearer to the airport. DC of Cox'sbazar district has sent consent paper to LGD on the alternate proposed land. Bagerhat DC office has estimated land value and Pourashava submitted the same to the PMO, However, the pourashava has been subsequently dropped from UGIIP-II phase 3,



Pourashava wise details of SRPs & IEEs prepared type of impacts and affected persons are presented in **Appendices**.



## 6. SAFEGUARD MONITORING

---

Monitoring of safeguards during and after project implementation is an integral part of any donor funded project. Monitoring of the safeguard aspects is regularly carried out by the UGIIP-II safeguard team based on document review and by undertaking field visits; monthly/quarterly progress reports are being submitted to PMO. The typical procedure adopted is as under:

### ***Monitoring of environmental safeguards***

- Document review of physical progress of subprojects by
  - Pourashava Sector
  - Environmental category
- Physical verification at site for
  - Adherence to EMP
  - Safety and other risks
  - Stakeholders/Community consultation
- Documentation of findings (including photographic evidences)

### ***Monitoring of Social Safeguards***

- Document review of physical progress of subprojects by
  - Pourashava
  - Sector
  - Social category and SRP
- Physical verification at site for
  - Adherence to SRP
  - Stakeholders/Community consultation
  - Grievances
- Documentation of findings (including photographic evidences of disbursements, site conditions)

The monthly monitoring reports and Quarterly Progress Reports are being prepared by the safeguard team and submitted regularly to the PMO.

### **Issues**

- Monitoring works suffered especially during the last quarter in the year due to long public holidays and frequent “Hartals”
- *Environment Health Safety (EHS) issues*

During the visits to the pourashavas it was pointed out to the contractor, MEs as well as pourashava officials that implementation of EHS especially in terms of personal protection equipments (PPE) is weak. PIU, ME and contractors have been advised to follow the EHS guidelines. It has been explained to the PIU, ME and contractors that implementation of EMP is a contractual obligation of the contractor and if not adhered to

during construction then PMO will take strict action against the contractor due to non implementation of EMP and EHS

- Land Acquisitions in the project is being carried out as per Land acquisition act of (Amendment 1994). Which specifies that the land cost to be considered as per the average cost by the land transfer costs in has three years + 50% additional compensation decided by the concern Deputy Commissioner Officer. As per Resettlement Framework of UGIIP-II, the project should consider independent assessment of cost of land to be acquired and replacement cost of land should be paid as compensation. The 'top up' payment should be paid to the affected person(s) as project assistance.

## 7. COMPLIANCE OF INDIGENOUS PEOPLES SAFEGUARD

---

Safeguard Requirements 3 outlines the requirements that borrowers/clients are required to meet in delivering Indigenous Peoples safeguards to projects supported by ADB. It specifies the requirements pertaining to

- (i) undertaking the social impact assessment and planning process;
- (ii) preparing social impact assessment reports and planning documents;
- (iii) disclosing information and undertaking consultation, including ascertaining consent of affected Indigenous Peoples community to selected project activities;
- (iv) establishing a grievance mechanism; and
- (v) monitoring and reporting.

UGIIP-II is being implemented as a sector loan and originally covered 35 *pourashavas* (secondary towns) that was later increased to cover 47 *pourashavas* during implementation. Among the districts where these 47 *pourashavas* are located, possibility of affecting indigenous people occurs in Cox's Bazar Khagrachari, Banadarban and Mymensing districts. However, it may be mentioned that the subprojects under UGIIP-II in these districts are located only within the urban area and do not impact any cluster/habitation area where indigenous people reside. However, to ensure that indigenous people are not adversely impacted by the project, UGIIP-II undertook screening of all the subprojects adopting a screening checklist before start of any project work in all the 47 *pourashavas*. Compliance to the above specific requirements for addressing Indigenous Peoples safeguard issues in the project has been carried out as under:

### **I. Undertaking the social impact assessment and planning process**

The planning process for identification of subprojects for inclusion in UGIIP-II followed a participatory approach with parallel activities: consultations, socioeconomic surveys, and initiation of Pourashava Development Plan (PDP) by means of open and facilitated ward level coordination committee (WLCC) and town level coordination committee (TLCC) visioning and planning meetings where potential schemes in each sector were proposed and discussed. The visioning and planning workshops included participants from the communities directly affected by the proposed schemes, members of ward committees, representatives of local NGOs, and representatives of local government agencies. The PDP process is well documented for each of the 47 *pourashavas* under UGIIP-II.

### **II. Preparing social impact assessment reports and planning documents**

Under UGIIP-II all subprojects were screened for their impact on indigenous people using a screening checklist (attached in Appendix 1). Social Assessment Reports was prepared for each sector (roads, bridges, water supply, low cost sanitation, solid waste management, drainage and other municipal services such as market, slaughterhouse and bus terminal etc.), subprojects were categorized as per ADB norm and SRPs were prepared wherever necessary.

### **III. Disclosing information and undertaking consultation, including ascertaining consent of affected Indigenous Peoples community to selected project activities**

In addition to the consultations held during project selection as part of PDP, detailed consultations were held with local community while carrying out screening of the

subprojects. Participants in these consultations included local community representatives, other community members/local residents including women participants.

#### **IV. Establishing a grievance mechanism**

Each participating pourashava has grievance redress committee headed by the mayor for redressal of any grievances due to the project. Each of the 47 pourashavas have complaint boxes accessible to all to receive complaints/grievances.

#### **V. Monitoring and reporting.**

Monitoring Reports by the safeguard team in the project is being submitted every month highlighting safeguard issues during the screening, implementation and operation stages.

## 8. COMPLIANCE OF LOAN COVENANTS

Loan covenants in terms of safeguard matter as mentioned in LA, Schedule 5 Para. 20, LA, Schedule 5 Para. 21, LA, Schedule 5 Para. 22, LA, Schedule 5 Para. 23 LA, Schedule 5 Para. 24 are being complied in the UGIIP-2 project . Compliance of loan covenants has been given in the following table -

### Second Urban Governance and Infrastructure Improvement (Sector) Project (UGIIP-II) Compliance of Loan Covenants

| Reference in LA |                         | Major Covenants   | Status of Compliance  |
|-----------------|-------------------------|---|---|
| 1.              | LA, Schedule 5 Para. 20 | <b>Safeguard Matters</b> - The Borrower shall ensure that sufficient funds to cover the costs of land acquisition and involuntary resettlement shall be made available in a timely manner.  | Appropriate measures have been taken to allocate and timely availability of funds required for land acquisition and involuntary resettlement.   |
| 2.              | LA, Schedule 5 Para. 21 | <b>Safeguard Matters</b> - LGED shall ensure that all land and right-of-way required shall be made available in at timely manner, and that compensation at replacement value and other entitlements shall be paid to affected people prior to the award of any civil works contract. LGED shall ensure that any involuntary resettlement and land or asset acquisition shall be in full compliance with (a) the resettlement framework agreed upon between LGED and ADB, and (b) the resettlement plan for the subproject. LGED shall ensure that all Pourashavas shall publicly disclose the draft resettlement plan for any subproject, in places and using language accessible to all affected people, prior to submission of such plan to ADB for ADB's review, approval, and disclosure on ADB's website. Immediately upon receiving external monitoring reports, LGED shall submit such reports to ADB for disclosure on its website. | Necessary steps have already been taken.  |
| 3.              | LA, Schedule 5 Para. 22 | <b>Safeguard Matters</b> – LGED shall ensure that the preparation and implementation of all sub-projects shall fully comply with ADB's Environment Policy (2002), as well as with relevant national and local environmental laws and regulations. All mitigation and monitoring mechanisms set out in the initial environmental examinations as well as the entire environmental assessment and review procedures shall be fully complied with throughout Project implementation. LGED shall ensure that environmental requirements shall be incorporated in bidding documents and civil work contracts.  | Appropriate measures have been taken in connection with Initial Environmental Examinations (IEE) in each subproject preparation. To comply with local environmental laws, EIAs have been prepared and NOC obtained from DoE, Government of Bangladesh for subprojects requiring them. |
| 4.              | LA,                     | <b>Safeguard Matters</b> – LGED shall ensure  | Appropriate measures have   |

| Reference in LA |                               | Major Covenants   | Status of Compliance   |
|-----------------|-------------------------------|---|--|
|                 | Schedule 5<br>Para. 23        | that the preparation and implementation of all subprojects shall fully comply with ADB's Policy on Indigenous People (1998), as well as with the Indigenous Peoples Development Framework for the Project, agreed upon between LGED and ADB, as set out in supplementary appendix N to the RRP for the Project.     | been taken from PMO at the time of preparation and implementation of each sub-project. |
| 5.              | LA,<br>Schedule 5<br>Para. 24 | <b>Safeguard Matters</b> - The Borrower shall ensure that all civil works contractors comply with all applicable labor laws, do not employ child labor as defined in national legislation for construction and maintenance activities, and do not differentiate wages between men and women for work of equal value | It has been ensured in the approved Bid documents.                                     |

# **APPENDICES**

---

**SUMMARY STATUS OF SAFEGUARD ASSESSMENT REPORTS**  
(As on December, 2013)  
**UGIIP-II Phase 2**

| Sector                 | Proposed<br>Pkgs./Schemes<br>(Nos.) |     | SSA<br>Reports<br>Submitted | IEE<br>Submitted | EIA<br>Submitted | Remarks                    | Field Visits Undertaken during<br>the reporting month for<br>Safeguard Monitoring   |
|------------------------|-------------------------------------|-----|-----------------------------|------------------|------------------|----------------------------|---|
|                        | Pkg                                 | Sch | (Pkgs)                      | (Pkgs.)          | (Pkgs.)          |                            |   |
| Urban Transport        | 213                                 | 884 | 213                         | 213              | 0                | No outstanding submission. | Pourashavas visited during the year 2013 for safeguard monitoring are as follows: <ul style="list-style-type: none"> <li>Kurigram, Narail &amp; Bhanga</li> </ul> |
| Water Supply           | 10                                  | 20  | 10                          | 10               | 4                | No outstanding submission. |   |
| Solid Waste Management | 21                                  | 68  | 21                          | 21               | 0                | No outstanding submission. |   |
| Drainage               | 55                                  | 219 | 55                          | 55               | 0                | No outstanding submission. |   |
| Sanitation             | 21                                  | 48  | 21                          | 21               | 0                | No outstanding submission. |   |
| Municipal Facilities   | 40                                  | 156 | 40                          | 40               | 0                | No outstanding submission. |   |



**SUMMARY STATUS OF SAFEGUARD ASSESSMENT REPORTS**  
(As on December, 2013)  
**UGIIP-II Phase 3**

| Sector                 | Proposed Pkgs./Schemes (Nos.) |      | SSA Reports Submitted | IEE Submitted | EIA Submitted | Remarks  | Details of Reports Submitted and Field Visits Undertaken during the reporting month  |
|------------------------|-------------------------------|------|-----------------------|---------------|---------------|--|--|
|                        | Pkg.                          | Sch. | (Pkgs.)               | (Pkgs.)       | (Pkgs.)       |  |  |
| Urban Transport        | 82                            | 612  | 82                    | 82            | 0             | No outstanding submission.   | <p><b><u>Pourashavas visited during the Last three months</u></b> by the Safeguard team are as follows:</p> <ul style="list-style-type: none"> <li>Kurigram , Patgram, Narail &amp; Bhanga</li> </ul> <p><b><u>Safeguard Reports Submitted:</u></b></p> <ul style="list-style-type: none"> <li>SSA Report of Drainage Sector submitted for Kurigram Pourashavas.</li> <li>EIA Report for Bhanga and ToR for Patgram Pourashava Bus Terminal submitted to DOE.</li> </ul> |
| Water Supply           | -                             | -    | -                     | -             | 0             | No package received yet.   |  |
| Solid Waste Management | -                             | -    | -                     | -             | 0             | No package received yet.   |  |
| Drainage               | 5                             | 40   | 4                     | 4             | 0             | SSA and IEE Report submitted for 4 out of the 5 packages finalized |  |
| Sanitation             | -                             | -    | -                     | -             | 0             | No package received yet.   |  |
| Municipal Facilities   | 6                             | 7    | 3                     | 3             | 1             | SSA and IEE Report submitted for 3 out of the 6 packages finalized |  |

## **SOCIAL SAFEGUARDS**

**Second Urban Governance & Infrastructure Improvement (Sector) Project (UGIIP-II) – Phase 2**  
**SECTOR SUB PROJECT WISE SOCIAL SAFEGUARD ASSESSMENT STATUS AS ON 31/12/2013**

| Sl. No            | Pourashava | Urban Transport |    |            | Water Supply  |   |            | Drainage      |    |            | Solid Waste Mgmt. |   |            | Sanitation    |   |            | Municipal facility |    |            |
|-------------------|------------|-----------------|----|------------|---------------|---|------------|---------------|----|------------|-------------------|---|------------|---------------|---|------------|--------------------|----|------------|
|                   |            | No of Pkg/Sch   |    | SSA Report | No of Pkg/Sch |   | SSA Report | No of Pkg/Sch |    | SSA Report | No of Pkg/Sch     |   | SSA Report | No of Pkg/Sch |   | SSA Report | No of Pkg/Sch      |    | SSA Report |
|                   |            | P               | S  |            | P             | S |            | P             | S  |            | P                 | S |            | P             | S |            | P                  | S  |            |
| Sylhet Division   |            |                 |    |            |               |   |            |               |    |            |                   |   |            |               |   |            |                    |    |            |
| 1                 | Sunamganj  | 4               | 29 | Submitted  | 1             | 1 | Submitted  | 1             | 4  | Submitted  |                   |   |            | 1             | 2 | Submitted  | 1                  | 11 | Submitted  |
| 2                 | Srimangal  | 3               | 8  | Submitted  | 1             | 2 | Submitted  | 1             | 10 | Submitted  | 1                 | 3 | Submitted  |               |   |            | 1                  | 2  | Submitted  |
| 3                 | Golapganj  | 1               | 4  | Submitted  | 1             | 1 | Submitted  | 2             | 14 | Submitted  |                   |   |            |               |   |            | 2                  | 6  | Submitted  |
| Dhaka Division    |            |                 |    |            |               |   |            |               |    |            |                   |   |            |               |   |            |                    |    |            |
| 1                 | Sreepur    | 6               | 7  | Submitted  | 1             | 1 | Submitted  | 2             | 3  | Submitted  | 1                 | 1 | Submitted  | 1             | 4 | Submitted  | 1                  | 12 | Submitted  |
| 2                 | Mirzapur   | 3               | 12 | Submitted  | 1             | 1 | Submitted  | 2             | 2  | Submitted  |                   |   |            |               |   |            |                    |    |            |
| 3                 | Ghorashal  | 8               | 23 | Submitted  |               |   |            | 1             | 2  | Submitted  |                   |   |            | 1             | 2 | Submitted  | 1                  | 6  | Submitted  |
| 4                 | Munshiganj | 7               | 24 | Submitted  |               |   |            | 1             | 5  | Submitted  | 1                 | 2 | Submitted  | 1             | 3 | Submitted  | 1                  | 4  | Submitted  |
| 5                 | Jamalpur   | 9               | 25 | Submitted  |               |   |            | 2             | 9  | Submitted  | 1                 | 4 | Submitted  | 1             | 1 | Submitted  | 3                  | 4  | Submitted  |
| 6                 | Mymensingh | 6               | 11 | Submitted  |               |   |            | 2             | 6  | Submitted  |                   |   |            |               |   |            | 1                  | 2  | Submitted  |
| 7                 | Bhanga     | 5               | 14 | Submitted  |               |   |            | 1             | 6  | Submitted  |                   |   |            | 1             | 1 | Submitted  | 1                  | 2  | Submitted  |
| 8                 | Faridpur   | 6               | 23 | Submitted  |               |   |            | 3             | 7  | Submitted  | 1                 | 2 | Submitted  | 1             | 1 | Submitted  | 3                  | 5  | Submitted  |
| Khulna Division   |            |                 |    |            |               |   |            |               |    |            |                   |   |            |               |   |            |                    |    |            |
| 1                 | Jhenaidah  | 8               | 37 | Submitted  |               |   |            | 2             | 2  | Submitted  | 1                 | 4 | Submitted  | 1             | 3 | Submitted  | 2                  | 14 | Submitted  |
| 2                 | Narail     | 8               | 34 | Submitted  |               |   |            | 1             | 3  | Submitted  | 1                 | 2 | Submitted  | 1             | 1 | Submitted  | 1                  | 4  | Submitted  |
| 3                 | Benapole   | 4               | 8  | Submitted  |               |   |            | 3             | 3  | Submitted  |                   |   |            |               |   |            | 1                  | 1  | Submitted  |
| 4.                | Satkhira   | 7               | 40 | Submitted  | 1             | 4 | Submitted  | 1             | 9  | Submitted  | 2                 | 4 | Submitted  | 1             | 4 | Submitted  | 2                  | 5  | Submitted  |
| 5.                | Bagerhat   | 7               | 18 | Submitted  | 1             | 6 | Submitted  | 1             | 2  | Submitted  |                   |   |            | 1             | 2 | Submitted  | 1                  | 1  | Submitted  |
| Barishal Division |            |                 |    |            |               |   |            |               |    |            |                   |   |            |               |   |            |                    |    |            |
| 1                 | Jhalakati  | 7               | 13 | Submitted  |               |   |            | 1             | 6  | Submitted  | 1                 | 1 | Submitted  | 1             | 1 | Submitted  | 1                  | 10 | Submitted  |
| 2                 | Bhola      | 9               | 35 | Submitted  |               |   |            | 1             | 5  | Submitted  | 1                 | 6 | Submitted  |               |   |            |                    |    |            |
| 3                 | Barguna    | 6               | 39 | Submitted  |               |   |            | 2             | 16 | Submitted  | 1                 | 2 | Submitted  | 1             | 4 | Submitted  | 2                  | 4  | Submitted  |
| 4.                | Kolapara   | 3               | 10 | Submitted  | 1             | 1 | Submitted  | 1             | 7  | Submitted  |                   |   |            | 1             | 1 | Submitted  |                    |    |            |

| Sl. No              | Pourashava   | Urban Transport |    |            | Water Supply  |   |            | Drainage      |    |            | Solid Waste   |    |            | Sanitation    |   |            | Municipal facility |    |           |
|---------------------|--------------|-----------------|----|------------|---------------|---|------------|---------------|----|------------|---------------|----|------------|---------------|---|------------|--------------------|----|-----------|
|                     |              | No of Pkg/Sch   |    | SSA Report | No of Pkg/Sch |   | SSA Report | No of Pkg/Sch |    | SSA Report | No of Pkg/Sch |    | SSA Report | No of Pkg/Sch |   | SSA Report |                    |    |           |
|                     |              | P               | S  |            | P             | S |            | P             | S  |            | P             | S  |            | P             | S |            |                    |    |           |
| Rajshahi Division   |              |                 |    |            |               |   |            |               |    |            |               |    |            |               |   |            |                    |    |           |
| 1                   | Thakugaon    | 10              | 33 | Submitted  |               |   |            | 3             | 5  | Submitted  |               |    |            | 1             | 2 | Submitted  | 1                  | 8  | Submitted |
| 2                   | Kurigram     | 7               | 68 | Submitted  |               |   |            | 2             | 11 | Submitted  | 1             | 3  | Submitted  |               |   |            | 1                  | 2  | Submitted |
| 3                   | Rangpur      | 8               | 44 | Submitted  |               |   |            | 3             | 5  | Submitted  |               |    |            | 1             | 1 | Submitted  |                    |    |           |
| 4                   | Dinajpur     | 6               | 27 | Submitted  |               |   |            | 3             | 9  | Submitted  | 1             | 20 | Submitted  | 1             | 5 | Submitted  | 2                  | 14 | Submitted |
| 5                   | Gaibandha    | 7               | 42 | Submitted  |               |   |            | 1             | 8  | Submitted  |               |    |            |               |   |            | 4                  | 6  | Submitted |
| 6                   | Natore       | 12              | 84 | Submitted  |               |   |            | 1             | 10 | Submitted  |               |    |            |               |   |            |                    |    |           |
| 7                   | Sirajganj    | 3               | 20 | Submitted  |               |   |            | 1             | 1  | Submitted  | 1             | 3  | Submitted  |               |   |            | 2                  | 5  | Submitted |
| 8                   | Nachol       | 2               | 5  | Submitted  | 1             | 2 | Submitted  | 1             | 3  | Submitted  |               |    |            |               |   |            | 1                  | 5  | Submitted |
| Chittagong Division |              |                 |    |            |               |   |            |               |    |            |               |    |            |               |   |            |                    |    |           |
| 1                   | Brahmanbaria | 8               | 31 | Submitted  |               |   |            | 1             | 10 | Submitted  |               |    |            |               |   |            | 1                  | 2  | Submitted |
| 2                   | Comilla      | 7               | 14 | Submitted  |               |   |            | 1             | 9  | Submitted  | 2             | 2  | Submitted  | 1             | 3 | Submitted  |                    |    |           |
| 3                   | Chandpur     | 7               | 30 | Submitted  |               |   |            | 1             | 11 | Submitted  | 2             | 7  | Submitted  | 1             | 4 | Submitted  | 1                  | 1  | Submitted |
| 4                   | Parshuram    | 4               | 24 | Submitted  | 1             | 1 | Submitted  | 1             | 1  | Submitted  |               |    |            |               |   |            |                    |    |           |
| 5                   | Noakhali     | 3               | 19 | Submitted  |               |   |            | 3             | 8  | Submitted  | 2             | 2  | Submitted  | 1             | 2 | Submitted  | 1                  | 14 | Submitted |
| 6                   | Chowmuhani   | 9               | 22 | Submitted  |               |   |            | 1             | 6  | Submitted  |               |    |            | 1             | 1 | Submitted  | 1                  | 6  | Submitted |
| 7                   | Cox's Bazar  | 3               | 7  | Submitted  |               |   |            | 1             | 1  | Submitted  |               |    |            |               |   |            |                    |    |           |

**Second Urban Governance & Infrastructure Improvement (Sector) Project (UGIIP-II) – Phase 3**  
**SECTOR SUB PROJECT WISE SOCIAL SAFEGUARD ASSESSMENT STATUS AS ON 31/12/2013**

| Sl. No          | Pourashava    | Urban Transport |            | Water Supply |            | Drainage  |            | Solid Waste Mgmt. |            | Sanitation |            | Municipal facility |            | Remarks<br>(Addl. Schemes Proposed) |
|-----------------|---------------|-----------------|------------|--------------|------------|-----------|------------|-------------------|------------|------------|------------|--------------------|------------|-------------------------------------|
|                 |               | No of Sch       | SSA Report | No of Sch    | SSA Report | No of Sch | SSA Report | No of Sch         | SSA Report | No of Sch  | SSA Report | No of Sch          | SSA Report |                                     |
| Sylhet Division |               |                 |            |              |            |           |            |                   |            |            |            |                    |            |                                     |
| 1               | Sunamganj     | 8               | Submitted  |              |            |           |            |                   |            |            |            |                    |            |                                     |
| 2               | Srimangal     | 3               | Submitted  |              |            |           |            |                   |            |            |            |                    |            | 1 MF                                |
| 3               | Golapganj     | 4               | Submitted  |              |            |           |            |                   |            |            |            |                    |            | 15 UT                               |
| 4               | Brahman Baria | 15              | Submitted  |              |            |           |            |                   |            |            |            |                    |            |                                     |
| 5               | Madhabpur     | 5               | Submitted  |              |            |           |            |                   |            |            |            |                    |            | 6 UT                                |
| Dhaka Division  |               |                 |            |              |            |           |            |                   |            |            |            |                    |            |                                     |
| 1               | Sreepur       | 2               | Submitted  |              |            |           |            |                   |            |            |            |                    |            |                                     |
| 2               | Mirzapur      | 6               | Submitted  |              |            |           |            |                   |            |            |            | 1                  | Submitted  | 8 UT                                |
| 3               | Ghorashal     | 9               | Submitted  |              |            |           |            |                   |            |            |            |                    |            | 7 UT                                |
| 4               | Munshiganj    | 9               | Submitted  |              |            |           |            |                   |            |            |            |                    |            |                                     |
| 5               | Jamalpur      | 21              | Submitted  |              |            |           |            |                   |            |            |            | 2*                 |            | 14 UT, 2 MF                         |
| 6               | Mymensingh    | 7               | Submitted  |              |            |           |            |                   |            |            |            |                    |            | 10 UT                               |
| 7               | Bhanga        | 4               | Submitted  |              |            |           |            |                   |            |            |            | 1                  | Submitted  |                                     |
| 8               | Faridpur      | 19              | Submitted  |              |            |           |            |                   |            |            |            |                    |            | 5 UT                                |
| 9               | Dhanbari      | 12              | Submitted  |              |            |           |            |                   |            |            |            |                    |            | 6 UT, 1 MF                          |
| 10              | Madaripur     | 16              | Submitted  |              |            |           |            |                   |            |            |            |                    |            |                                     |
| 11              | Gopalganj     | 12              | Submitted  |              |            |           |            |                   |            |            |            |                    |            | 5 UT                                |
| Khulna Division |               |                 |            |              |            |           |            |                   |            |            |            |                    |            |                                     |
| 1               | Jhenaidah     | 23              | Submitted  |              |            |           |            |                   |            |            |            |                    |            | 7 UT                                |
| 2               | Narail        | 15              | Submitted  |              |            |           |            |                   |            |            |            |                    |            | 7 UT                                |
| 3               | Benapole      | 7               | Submitted  |              |            | 2         | Submitted  |                   |            |            |            |                    |            |                                     |
| 4.              | Satkhira      | 7               | Submitted  |              |            |           |            |                   |            |            |            |                    |            | 4 UT                                |
| 5.              | Kushitia      | 11              | Submitted  |              |            |           |            |                   |            |            |            |                    |            | 8 UT                                |
| 6               | Chuadanga     | 16              | Submitted  |              |            | 7         | Submitted  |                   |            |            |            |                    |            |                                     |

| Sl. No            | Pourashava | Urban Transport |            | Water Supply |            | Drainage  |            | Solid Waste |            | Sanitation |            | Municipal facility |            | Remarks<br>(Addl. Schemes Proposed) |
|-------------------|------------|-----------------|------------|--------------|------------|-----------|------------|-------------|------------|------------|------------|--------------------|------------|-------------------------------------|
|                   |            | No of Sch       | SSA Report | No of Sch    | SSA Report | No of Sch | SSA Report | No of Sch   | SSA Report | No of Sch  | SSA Report | No of Sch          | SSA Report |                                     |
| Barishal Division |            |                 |            |              |            |           |            |             |            |            |            |                    |            |                                     |

|                            |             |    |           |  |  |    |           |  |  |  |  |    |           |                 |
|----------------------------|-------------|----|-----------|--|--|----|-----------|--|--|--|--|----|-----------|-----------------|
| 1                          | Jhalakati   | 6  | Submitted |  |  | 3* |           |  |  |  |  |    |           | 4 UT, Dr 1 Pkg. |
| 2                          | Bhola       | 23 | Submitted |  |  |    |           |  |  |  |  |    |           |                 |
| 3                          | Barguna     | 9  | Submitted |  |  |    |           |  |  |  |  |    |           | 8 UT            |
| 4.                         | Kalapara    | 6  | Submitted |  |  |    |           |  |  |  |  |    |           | 2 UT Pkgs       |
| 5                          | Lalmohan    | 16 | Submitted |  |  |    |           |  |  |  |  |    |           |                 |
| 6                          | Patuakhali  | 11 | Submitted |  |  |    |           |  |  |  |  |    |           | 2 UT Pkgs       |
| <b>Rajshahi Division</b>   |             |    |           |  |  |    |           |  |  |  |  |    |           |                 |
| 1                          | Thakurgaon  | 25 | Submitted |  |  |    |           |  |  |  |  |    |           | 3 UT            |
| 2                          | Kurigram    | 09 | Submitted |  |  | 20 | Submitted |  |  |  |  |    |           | 6 UT, DR 1 Pkg. |
| 3                          | Gaibandha   | 20 | Submitted |  |  |    |           |  |  |  |  |    |           |                 |
| 4                          | Natore      | 26 | Submitted |  |  |    |           |  |  |  |  |    |           | 13 UT           |
| 5                          | Sirajganj   | 8  | Submitted |  |  |    |           |  |  |  |  | 1* |           | 5 UT, 1 MF      |
| 6                          | Nachol      | 5  | Submitted |  |  |    |           |  |  |  |  |    |           |                 |
| 7                          | Nilphamari  | 32 | Submitted |  |  |    |           |  |  |  |  | 1* |           | 1 MF            |
| 8                          | Kakanhat    | 6  | Submitted |  |  |    |           |  |  |  |  |    |           | 5 UT            |
| 9                          | Pabna       | 9  | Submitted |  |  |    |           |  |  |  |  |    |           |                 |
| 10                         | Patgram     | 13 | Submitted |  |  |    |           |  |  |  |  | 1  | Submitted | 12 UT           |
| <b>Chittagong Division</b> |             |    |           |  |  |    |           |  |  |  |  |    |           |                 |
| 1                          | Chandpur    | 17 | Submitted |  |  |    |           |  |  |  |  |    |           | 9 UT            |
| 2                          | Parshuram   | 16 | Submitted |  |  |    |           |  |  |  |  |    |           | 8 UT            |
| 3                          | Noakhali    | 8  | Submitted |  |  |    |           |  |  |  |  |    |           |                 |
| 4                          | Chowmuhani  | 22 | Submitted |  |  |    |           |  |  |  |  |    |           |                 |
| 5                          | Cox's Bazar | 10 | Submitted |  |  |    |           |  |  |  |  |    |           |                 |
| 6                          | Haziganj    | 11 | Submitted |  |  | 8  | Submitted |  |  |  |  |    |           | 7 UT            |
| 7                          | Basurhat    | 8  | Submitted |  |  |    |           |  |  |  |  |    |           | 8 UT            |
| 8                          | Bandarban   | 18 | Submitted |  |  |    |           |  |  |  |  |    |           | 10 UT           |
| 9                          | Khagrachari | 14 | Submitted |  |  |    |           |  |  |  |  |    |           | 7 UT            |

Note: \* indicates site visits for screening of the proposed schemes have been completed

## Summary Report: Monitoring of Social Impacts- Phase-2 (Up to December 2013)

### **Sector: Urban Transport**

Requirement of Land Acquisition : Nil

Short Resettlement Plan (SRP) Prepared :

Mymensingh – PDP No. 05, 1 tea stall affected, Estimated payment – Tk 2662

**No objection certificate obtained**

Mirzapur – PDP No. 28, Private land, No acquisition required, **Owner given written permission**

Mirzapur - PDP No. 05, 5 trees affected, **No objection certificate obtained**

Cox's Bazar – PDP-05, Boundary wall affected, PDP-15, 1 shop affected, Estimated payment – Tk 43000, **No objection certificate obtained**

Jhalakathi - PDP No. 07, Boundary wall and trees affected, **No objection certificate obtained**

Ghorashal - PDP No. 01, 3 trees affected, **No objection certificate obtained**

Nachal - PDP No. 06, 1 tree affected, **Pourasabha owner**, Estimated payment – Nil

Sreepur - PDP No. 01&2, Tree affected, **Pourasabha owned**, Estimated payment – Nil

Parshuram - PDP-01, 1 shop affected, PDP- 04, 2 trees affected, Estimated payment – Tk 23595

**No objection certificate obtained**

Barguna - PDP No. 2, Tree affected, **No objection obtained**, Estimated payment – Nil

Bhola - PDP No. 2, Boundary wall, trees and Kutch house part affected, **No objection obtained**,

Comilla - PDP No. 3 & 34(i), 1 tea stall and 1 tree affected, Estimated payment – Tk 5566,

**Compensation Paid**

Kalapara - PDP No. 11, trees affected, **No objection obtained**, Estimated payment – Nil

Rangpur - PDP No. 13, 1 shop affected, **No objection certificate obtained.**

Compensation/Assistance Paid : Comilla - PDP No. 3 & 34(i),  
**Compensation Paid**

Emergence of any issue during monitoring : A court case is filed by affected parties as well as by the Pourashava for one of the road schemes (PDP 03 in Golapganj). The scheme has not been taken up for implementation pending the court case outcome.

Forward Action :

Letters have been sent from PMO to concerned pourashavas to comply with R&R requirements through payment of compensation in case of involuntary resettlement. In case of APs agreeing for voluntary contribution, written NOC from the AP must be obtained.

No objection/demand certificates are obtained from affected persons identified through screening and compensation/assistance assessed through SRP and assistance paid to the AP.

### **Sector: Water Supply**

Requirement of Land Acquisition : Nil

Need for SRP : Nil

Compensation/Assistance Paid : Nil

Emergence of any issue during monitoring : Nil

Forward Action: : Nil



## **Sector: Drainage**

Requirement of Land Acquisition : Nil

Need for SRP : Nil

Compensation/Assistance Paid : Nil

Emergence of any issue during monitoring :

Rangpur - Bamboo and Tin made boundary wall are on drain alignment, which are need to shifting.  
Work temporarily suspended due to rain.

Comilla – Seven nos. electricity poles are on drain alignment, which are to be shifted.

### Forward Action

Rangpur – Consultations revealed willingness of the affected persons to voluntarily remove the affected Bamboo and Tin made boundary wall due to the project and have no demand for compensation. Pourashava officials have agreed to collect the written consent/undertaking from the APs.

Comilla – Pourashava has been informed to take necessary action for shifting the obstructing electric poles..

## **Sector: Solid Waste Management**

### Requirement of Land Acquisition

Proposal for land acquisition received from 13 pourashavas namely Faridpur, Bhanga, Mirzapur, Benapole, Narail, Satkhira, Bagerhat, Kurigram, Nachol, Ghorashal, Sreemangal, Chowmuhani, Cox's Bazar for dumping ground. LA processes are at various stages.

Proposed location at Cox's Bazar was found to be environmentally unsuitable as the location is close to the airport. 1st proposal cancelled for being nearest Air Port, again PMO sent letter to Pourashava for submission of new land proposal. But PS not yet submitted new proposal to PMO.

Bagerhat Pourashava already drop from UGIIP-II project.

Nachole Pourashava has sent a request letter to PMO for permission to select a new location due to some constraints in land acquisition. 1st proposal cancelled for being high value of land again PMO sent letter to Pourashava for submit new land proposal. But Nachole Pourashava not yet submitted new proposal to PMO.

### SRP Prepared

Jamalpur – PDP 1 - Part of house and 3 trees affected, Estimated Cost – Tk 12100 It has been informed by Pourashava that the proposed scheme is postponed.

Compensation/Assistance Paid : The compensation/assistance to be paid for land acquisition in Faridpur Bhanga & Satkhira Pourashava has been released by the PMO.

Emergence of any issue during monitoring : Nil

Forward Action : Nil

Jamalpur - Project Director has sent a letter to concerned pourashava to meet up the compensation/NOC for the AP according to social safeguard assessment. However, no action from Pourashava side as the sub-project has been dropped.

**Sector: Sanitation**

Requirement of Land Acquisition : Nil

Need for SRP : Nil

Compensation/Assistance Paid : Nil

Emergence of any issue during monitoring : Nil

Forward Action : Nil

**Sector: Municipal Facilities**

Requirement of Land Acquisition : Nil

Need for SRP : Nil

Compensation/Assistance Paid : Nil

Emergence of any issue during monitoring : Nil

Forward Action :

Sunamganj, Mymensing, Jhalokathi and Sirajganj Pourashavas arranged temporary area for shifting of the traders of Municipal Market/ Katcha Bazar during construction of the municipal markets in their respective pourashava. Agreement with traders/ trader's association was drawn before shifting the traders from their existing shops.

## Summary Report: Monitoring of Social Impacts: UGIIP Phase: 3 (Upto December 2013)

**Sector: Urban Transport**

Requirement of Land Acquisition : Nil

Short Resettlement Plan (SRP) Prepared for the following :

| Pourashava  | PDP No./ Name of Scheme   | Identified Impact   | Estimated Payment for the Loss                 | Remark  |
|-------------|---|---|--|---|
| B'Baria     | PDP-01: Kazipara Moulovi para Bridge (25.9m):                                 | For construction of the approach road on south side of the bridge, boundary walls will be affected. | Tk 72, 34,000/-                                |   |
| Ghorasal    | PDP-11  | One Jam fruit tree owned by Pourashava will be affected   | Payment not required. Tree owned by Pourashava |   |
|             | PDP-196   | One pucca boundary wall and 2 nos. kutchha structures will be affected                              | Tk 35,950/-                                    | Document from APs for voluntarily shifting the affected structures obtained |
| Mirzapur    | Imp. of road from Ammatunnessa school to house of Abdus Salam Kumarjani by CC | A part of the road that passes through narrow stretch is under widening through Pourashava          | Nil  | No objection certificate obtained   |
| Sunamganj   | PDP-21(a)   | Five tin shed shops, and electric poles and trees will be affected                                  | Nil  | No objection certificate obtained   |
| Bhola       | PDP-31  | 25 trees will be affected   | Nil  | No objection certificate obtained   |
| Jhalokati   | PDP-10  | Boundary walls and 14 trees will be affected  | Nil  | No objection certificate obtained   |
| Kalapara    | PDP20   | Boundary walls and 16 trees will be affected  | Nil  | No objection certificate obtained   |
| Barguna     | PDP No. 3, 4, 9 & 14  | 290 Trees will be affected  | Nil  | No objection certificate obtained   |
| Bhanga      | PDP -1 (03)   | A stair of a house and 38 trees will be affected  | Nil  | No objection certificate obtained   |
| Madaripur   | PDP -138, 84 & 99   | 45 trees will be affected   | Nil  | No objection certificate obtained   |
| Gopalganj   | RD-03, 04, 06 & DR-02, 03   | 20 trees & some portion of a house will be affected   | Nil  | No objection certificate obtained   |
| Gaibandha   | PDP -115 & 4  | 08 trees & tin shed boundary wall will be affected  | Nil  | No objection certificate obtained   |
| Nilphamari  | PDP - 68, 55 & 58   | 12 trees & tin shed boundary wall will be affected  | Nil  | No objection certificate obtained   |
| Hajiganj    | PDP -05   | Brick made boundary wall will be affected   | Nil  | No objection certificate obtained   |
| Munshiganj  | PDP -50 & 54  | 2 trees, Cow shed & tin shed boundary wall will be affected   | Tk 54,450/-                                    |   |
| Cox's Bazar | PDP -09   | 1no. private owned trees  | Tk 8,470/-.                                    |   |
| Bandarban   | PDP -22   | 3nos. private owned trees   | Tk 18,150/-.                                   |   |
| Khagrachari | PDP33,5799,90,100   | Boundary wall & gate affected.  | Nil  | No objection certificate obtained   |

Compensation/Assistance Paid : Nil

Emergence of any issue during monitoring : Nil

Forward Action :

No objection/demand certificates are obtained from affected persons identified through screening and compensation/assistance except for Munshiganj, B'Baria and Ghorashal. SRP prepared for the three Pourashavas.

**Sector: Water Supply**

Requirement of Land Acquisition : Nil

Need for SRP : Nil

Compensation/Assistance Paid : Nil

Emergence of any issue during monitoring : Nil

Forward Action for meeting the issue : Nil

**Sector: Drainage**

Requirement of Land Acquisition : Nil

Short Resettlement Plan (SRP) Prepared :

| Pourashava                                    | PDP No./ Name of Scheme | Identified Impact                                   | Estimated Payment for the Loss | Remark                            |
|---|-------------------------|---|--------------------------------|-----------------------------------|
| KURIGRAM<br>UGIIP-II-<br>3KURI-DR-<br>01/2012 | TLCC- SL NO; 01         | Boundary wall (Tin made)                            | Payment not required.          | No objection certificate obtained |
|   | TLCC-SL NO; 04          | Boundary wall (Tin made& bamboo made part of house) | Payment not required.          | No objection certificate obtained |
|   | TLCC-SL NO;07           | 6nos trees and a gate                               | Payment not required.          | No objection certificate obtained |
|   | TLCC-SL NO;08           | 7 no's trees  | Payment not required.          | No objection certificate obtained |
|   | TLCC-SL NO;09           | 4nos trees and a gate                               | Payment not required           | No objection certificate obtained |
| Hajiganj                                      | PDP -05                 | Brick made boundary wall will be affected           | Payment not required           | No objection certificate obtained |

Need for SRP : Nil

Compensation/Assistance Paid : Nil

Emergence of any issue during monitoring : Nil

Forward Action : Nil

**Sector: Solid Waste Management**

Requirement of Land Acquisition :

Land acquisition proposals were received from 13 Pourashavas for dumping grounds, LA process is at various stages. Out of the 13 Pourashavas, PMO has already issued cheques for payment of compensation to 6 Pourashavas (Chowmuhami, Ghorasal, Faridpur, Bhanga, Satkhira, Sreemongal). Cox's Bazar and Nachole Pourashava have submitted revised proposals to PMO that is under consideration.

|   |       |
|---|-------|
| <u>SRP Prepared</u>                             | : Nil |
| <u>Compensation/Assistance Paid</u>             | : Nil |
| <u>Emergence of any issue during monitoring</u> | : Nil |
| <u>Forward Action</u>                           | : Nil |
| <b>Sector: Sanitation</b>                       |       |
| <u>Requirement of Land Acquisition</u>          | : Nil |
| <u>Need for SRP</u>                             | : Nil |
| <u>Compensation/Assistance Paid</u>             | : Nil |
| <u>Emergence of any issue during monitoring</u> | : Nil |
| <u>Forward Action</u>                           | : Nil |

**Sector: Municipal Facilities**

Requirement of Land Acquisition

Land acquisition proposals were received from Patgram Pourashava for Bus and Truck Terminal. PMO has already issued the check to the Pourashava. The land for the proposed Bus and Truck Terminal is under the possession of the said Pourashava.

**Bhanga Pourashava** proposed for construction of a bus terminal. Bhanga pourashava applied to DC for permission to use 1.11 acre area for the bus terminal. Approval of lease conditions and permission to use the land is in advance stage with the DC. Discussions are ongoing with the shop keepers for the temporary shifting of the shops and rehabilitation after the construction.

**Patgram Pourashava** has proposed for a bus terminal. Proposal for acquisition of 1.7225 acres of private land near Singimari Khal has been approved; award amount of Taka 51.19 lakh given by PMO for the purpose has been deposited to DC office by the Pourashava. At present LA Department handed over the land to Pourashava. The land for the proposed Bus Terminal is under the possession of the Pourashava.

**Nilphamari Pourashava** has proposed for a market. Ownership of the land for the proposed market belongs to Pourashava. At present 72 nos. shops are operating at the proposed site. No objection has been obtained from the shop keepers and they have consented for voluntary shifting from the site during the construction period. Consultations reveal that the shop keepers expect better business after the construction of the market. Further consultation with the shop keepers is ongoing for the temporary shifting of the shops and rehabilitation after the construction.

**Benapole Pourashava** has proposed a community Centre. The proposed location is at an abandon godown. At present ownership of the land belongs to LGED. Benapole Pourashava applied to LGED for sanction of 0.20 acre area for the proposed project.

|   |       |
|---|-------|
| <u>Need for SRP</u>                             | : Nil |
| <u>Compensation/Assistance Paid</u>             | : Nil |
| <u>Emergence of any issue during monitoring</u> | : Nil |
| <u>Forward Action for meeting the issue</u>     | : Nil |

**INFORMATION ON AFFECTED PERSONS AND STATUS OF PAYMENT OF COMPENSATION/ASSISTANCE (Upto December 2013)  
(UGIIP- II Phase- 2)**

| Package no.                  | Description   | Name and Address of the Affected person         | Type of Loss                       | Amount (in TK) | Remarks  |
|------------------------------|---|---|------------------------------------|----------------|--|
| <b>KfW FUNDING COMPONENT</b> |   |   |                                    |                |  |
| UGIIP-II-2/<br>MYMEN-UT-03   | Rehabilitation of road starting from Khagdahor CSD Godown to Tangail main road at Galaganda Bazar via Khagdahor rail station Ch: 0+0 to Ch.2+350, Khagdahor station road Ch.0+0 to Ch.0+100 and Thakorbari road Ch.0+0 to Ch.0+300) by DBC, Construction of 3nos 900x900mm cross drain, construction of 190m retaining wall & 475m road side drain wall (guard wall). | Mr. Shamsul Islam,<br>Khagdahor<br>Mymenshingh. | 1 tea stall affected               | 2662/-         | MOU Obtained<br><br>SRP Prepared.  |
| UGIIP-II-2/ RANG<br>-UT-03   | Rehabilitation of Guratipara rd from Ganeshpur club to Mulatol Pukurpar (Ch 0+0 to 1+215m, link 0+234 m)  | Mr. Akmal Hossain<br>Guratipara, Rangpur        | 1 shop affected                    | 2662/-         | MOU Obtained   |
| <b>ADB FUNDING COMPONENT</b> |   |   |                                    |                |  |
| UGIIP-II-2/MIRZA-<br>UT-1    | Improvement of road by CC from Kedarpur Road to Kanthalia Kheyaghat (Ch.0+00 to Ch.0+480m) and 2m x 1.8m Box culvert  | Mr. Md.Yousuf<br>Hossain, Kanthalia<br>Mirzapur | 5 trees affected                   | 4356/-         | Only 1 tree was required to be cut and compensation for the same paid to the AP<br>SRP Prepared. |
| UGIIP-II-2/COX's-<br>UT-01   | Improvement of Ghonarpara to Moulubi para road by DBC (Ch.0+00 to Ch.0+510) & 510m Brick U-Drain & RCC X-Drain (length- 5m).  | Mr. Azizul Haque,<br>Thana Sadar Cox's<br>Bazar | Boundary wall affected             | 29500/-        | MOU Obtained   |
| UGIIP-II-2/COX's-<br>UT-03   | Improvement of Islampura Road by CC (Ch. 0+00 to Ch.0+180) & 380m Retaining & RCC Box-culvert 1x 2.0x2.0m   | Mr. Abdus Salam,<br>Thana Sadar Cox's<br>Bazar  | 1 shop affected                    | 13500/-        | MOU Obtained   |
| UGIIP-II-2/JAMA-<br>SWM-01   | Construction of Solid Waste Transfer Station, Type'A' - Challapara  | Mr. Mashud Rana,<br>Challapara Jamalpur         | Part of house and 3 trees affected | 12100/-        | Work not carried out   |
| UGIIP-II-2/Com-<br>UT/01     | Improvement of Rammala Road (Ranir bazar to Kotbari road) Ch-0+00 to Ch-1+150m.   | Mr. Abdul Mia ,<br>Thana Sadar, Comilla         | 1 tea stall affected               | 1566/-         | Compensation paid.<br>SRP Prepared.  |
| UGIIP-II-2/Com-<br>UT/02     | Improvement of 2nd Muradpur Chowdhury road in front of Daspara via Dr. Iddris house road at Ch-0+00 to Ch-0+740m  | Mr. Badal Mia<br>Thana Sadar Comilla            | 1 tree affected                    | 4000/-         | Compensation paid.<br>SRP Prepared.  |

| Package no.            | Description  | Name and Address of the Affected person        | Type of Loss     | Amount (in TK) | Remarks  |
|------------------------|--|--|------------------|----------------|--|
| UGIIP-II-2/ PARS-UT/01 | Improvement of Bilonia Jame mosque road .by DBC (Ch 0+00-0+160) and RCC cross drain, RCC Retaining wall (L-70m) & Improvement of road from Dublachand ATEO road to river dam towards west with road protection work .by CC (Ch 0+00-0+120)   | Mr. Abdul Malek<br>Thana Sadar<br>Parshuram.   | 1 shop affected  | 17450/-        | MOU Obtained & Compensation paid.<br>SRP Prepared. |
| UGIIP-II-2/ PARS-UT/03 | Improvement of road from West Solia Jame Mosque via. Mijan Master's house to Solia Primary School by DBC (Ch0+00-0+300) and RCC single vent 2.0m x1.6m Box culvert and B/W U drain (L-40m) and rehabilitation of road from Khandokar House and Construction of Nayeb Bari Majar rd. to the Primary School By DBC (Ch 0+00-0+340) and RCC cross drain | Mr. Rafiqul Islam,<br>Thana Sadar<br>Parshuram | 2 trees affected | 6145/-         | MOU Obtained & Compensation paid.<br>SRP Prepared. |

**INFORMATION ON AFFECTED / STATUS OF PAYMENT OF COMPENSATION/ASSISTANCE (Upto December 2013)  
(UGIIP- II Phase- 3)**

| INFORMATION ON AFFECTED PERSONS              |  |  |  |                  |                          |                                      |                   |
|--|--|--|--|------------------|--------------------------|--------------------------------------|-------------------|
| Pourashava/<br>Package No.                   | Description of the Project   | Name and Address<br>of the Affected<br>person  | Type of Loss   | Amount in<br>TK. | Payment<br>Status        | Remark                               | Pending<br>Action |
| <b>SECTOR – URBAN TRANSPORT</b>              |  |  |  |                  |                          |                                      |                   |
| <b>KfW Component</b>                         |  |  |  |                  |                          |                                      |                   |
| Mirzapur.<br>UGIIP-II-3/<br>MIRZA-UT/01/12   | Improvement of road from<br>Ammatunnessa school to house of<br>Abdus Salam Kumarjani by CC.  |  | A part of the road,<br>passes through -<br>narrow stretch is<br>under widening |                  | Payment not<br>required  | Widening through<br>Pourashava fund  | Nil               |
| Gaibandha<br>UGIIP-II-3/GAIB-<br>UT-03/2012  | PDP -115:Construction of road from<br>Forest Department to Shalamil road<br>Labu shop via Eid-Gha mat  | Mr.Rokon,Mahedi,M<br>ahabub,Zakaria,Alim,<br>Rousan with<br>councilor,Ward<br>no;o3,Gaibandha. | 12 no. private owned<br>trees will be affected                                 | -                | Payment not<br>required. | No objection<br>certificate obtained | Nil               |
|  | PDP -42:Re-Construction Shashangat<br>to Ebrahim house .   | Mr.Rezaul,Labu,Gola<br>p,Isha&Roni Ward<br>no;o4,Gaibandha.                                    | 03 no. private owned<br>trees will be affected                                 | -                | Payment not<br>required. | No objection<br>certificate obtained | Nil               |
| Nilphamari<br>UGIIP-II-3/GAIB-<br>UT-03/2012 | PDP -68: Improvement of road work by<br>Circuit house road Late Kazi Tofazzal<br>Hossain house to towards south upto<br>Natun Bazar at ch: 0.00m -325.00m,<br>under Nilphamari Pourashava.           | Mr.Zakiul,Mamnur,A<br>khter,Younus ,Hazi<br>Abubakar Ward<br>no;o8,Nilphamari                  | 05 no. private owned<br>trees will be affected                                 | -                | Payment not<br>required. | No objection<br>certificate obtained | Nil               |
|  | PDP -55: Construction of RCC Road<br>work by Shantinagar Road Wadul<br>house to Shahipara Road Wahad<br>house at Ch: 0.00-263.00m under<br>Nilphamari Paurashava.                                    | Mrs.Azima,Rupali,Na<br>znin<br>Ward<br>no;o7,Nilphamari  | 04 no. private owned<br>trees will be affected                                 | -                | Payment not<br>required. | No objection<br>certificate obtained | Nil               |
|  | PDP -58: Construction of RCC Road<br>Work at south Side of central<br>Graveyard Boundary to towards east<br>up to Santinagar Road Adud house at<br>Ch: 0.00-420.00m, under Nilphamari<br>Paurashava. | Mr.Wadud,Zahangi,S<br>atter,Halim<br>Ward no;o5,<br>Nilphamari                                 | Tin made boundary<br>wall will be affected                                     | -                | Payment not<br>required. | No objection<br>certificate obtained | Nil               |



| INFORMATION ON AFFECTED PERSONS                 |   |   |  |                  |                          |   |                         |
|---|---|---|--|------------------|--------------------------|---|-------------------------|
| Pourashava/<br>Package No.                      | Description of the Project  | Name and Address<br>of the Affected<br>person   | Type of Loss   | Amount in<br>TK. | Payment<br>Status        | Remark  | Pending<br>Action       |
| <b>ADB Component</b>                            |   |   |  |                  |                          |   |                         |
| B"Baria.<br>UGIIP-II-3/BRAH /<br>UT/01(B)/2012  | Kazipara Moulovi para Bridge (25.9m)  | Mr. Nazmul Hai, Mr.<br>Ashiqul Bari & Mr.<br>Salauddin'<br>Kazipara Moulovi<br>para,B"Baria   | Construction of the<br>approach road on<br>south side of the<br>bridge will affect<br>boundary walls | Tk 72,34,000/-   |                          | No objection<br>certificate not yet<br>obtained | <b>SRP<br/>Prepared</b> |
| Ghorasal.<br>UGIIP-II-3/<br>GHOR-<br>UT/01/2012 | PDP-11: Construction of Bituminous<br>Carpeting road from Khanepur south<br>para Forkania Madrasha to south<br>Zinaedi union road   | Tree owned by<br>Pourashava   | One Jam fruit tree<br>owned by<br>Pourashava will be<br>affected,                                    | Tk 5000/-        | Payment not<br>required  | Tree owned by<br>Pourashava                     | <b>SRP<br/>Prepared</b> |
| Ghorasal.<br>UGIIP-II-3/<br>GHOR-<br>UT/01/2012 | PDP-196: Construction of CC road from<br>Co-operative Bottala to collage road via<br>Tasars house at Balucharpara   | Mr. Sukur Miah, S/o<br>Md.Hashem<br>Miah,,Balucharpara,<br>Polash.& Mr. Nurul<br>Islam, S/o Late<br>Solaiman,<br>Balucharpara,<br>Polash ,Ghorasal.   | One pucca boundary<br>wall and 2 nos.<br>kutcha structures will<br>be affected.                      | Tk 35950/-       |                          | No objection<br>certificate obtained            | <b>SRP<br/>Prepared</b> |
| Sunamganj.<br>UGIIP-II-<br>3/SUNA/UT/05         | PDP-21(a) Development of Hospital<br>Road (From Bihari Point to District Krira<br>Sangstha)   | Tree owned by<br>Pourashava   | Five tin shed shops,<br>boundary walls and<br>electric poles.  | -                | Payment not<br>required. | No objection<br>certificate obtained            | <b>SRP<br/>Prepared</b> |
| Bhola.<br>UGIIP-II-3/BHO-<br>UT-01/2012         | PDP-31: Improvement of RCC road<br>from Chatolia road to Vodra para road<br>(Dorzibari road) (3 nos. X drain)   | Mr.Nayon, Ratan,<br>Malek, Amain, Dulal,<br>Ibrahim &Yakub<br>Ward no;o3,Bhola  | 25 trees will be<br>affected   | -                | Payment not<br>required. | No objection<br>certificate obtained            | Nil                     |
| Kalapara.<br>UGIIP-II-2/KALA-<br>UT-01-12       | PDP20: Improvement of Rahamatpur<br>Main road from south side of<br>Samajkallayan Office to RHD road by<br>Bituminous Carpeting with a<br>3.00mx2.30m Single vent RCC Box<br>Culvert at Ch1230.0m & Road side<br>RCC drain from North side of<br>Rahamatpur Mosque to North side Khal | Mr.Monzur,Atikur,An<br>war,Alamin,Alam,Oli,<br>Subarna,Sabina,Jasi<br>m,Bashona,Biren,Sh<br>andha,Kalachand,Yo<br>usuf,Rashid,Yousuf,<br>Nishat,Devi,Nogendr<br>a,Biplob,Emran,Nasi<br>ma,Nur Md, Tapan<br>Jalal, Jesmin &<br>Shawkat-Kalapar | Boundary walls and<br>16 trees will be<br>affected   | -                | Payment not<br>required. | No objection<br>certificate obtained            | Nil                     |

| INFORMATION ON AFFECTED PERSONS                        |   |   |   |                  |                       |                                   |                   |
|--|---|---|---|------------------|-----------------------|-----------------------------------|-------------------|
| Pourashava/<br>Package No.                             | Description of the Project  | Name and Address<br>of the Affected<br>person   | Type of Loss                                | Amount in<br>TK. | Payment<br>Status     | Remark                            | Pending<br>Action |
| Barguna.<br>UGIIP-II-2/BARG-<br>UT-03/2012             | PDP:03 Improvement of Gagon Ali sarak starting from RHD road via Mokbul Talukder house to Kalibari road near Maitha school by BC in ward no-03 (Ch.240.00 to 1254.00m and link-96.00m) including 02 nos. cross drain            | Mr. Habur, Razzak, Wahab, Mosaraf, Sobhan, Jalal, Siddique, Monir, Amzad, Hossain, Harun, Atahar          | 20 trees will be affected                   | -                | Payment not required. | No objection certificate obtained | Nil               |
|  | PDP:04 Improvement of Police line road at the west side of RDF Office to Badal Miah house by RCC in ward no-02 (Ch.00 to 290.00m)   | Mr.Mannan,Fatima, Mafuz,Faisal,Nazibur ,Monir,Badal,Miraz& Rani-Barguna                                   | 10 trees will be affected                   | -                | Payment not required. | No objection certificate obtained | Nil               |
| Barguna.<br>UGIIP-II-2/BARG-<br>UT-03/2012             | PDP:04 Improvement of Dhanshiri road by BC from DKP road via Dulal Farazi house to Crook CC on Crook road in ward no-04 (Ch.00 to 1310.00m and link Ch.00 + 325.00m & Ch.00 + 250.00m) Improvement of Dhanshiri road link road. | Mr.Emadul,Jalil,Sagir ,Tusar,Mannan,Mosaraf,Alamgir,Golam,Sagir,Tofazzal,Wahab, Mitu,Dulal&Khabir-Barguna | 220 trees will be affected                  | -                | Payment not required. | No objection certificate obtained | Nil               |
|  | PDP:09 Improvement of Baraitala road in front of Gani Madrasha to Nawab Ali Houlader house at Baraitala, ward no-06 by BC (Ch.0+ 00 to Ch- 370.00m + link 180.00m)  | Mr,Nuru,Ibrahim,For kan,Fakir,Jainul,Nasir,Mostofa,Ripon,Khalil&Mintu Barguna                             | 12 trees will be affected                   | -                | Payment not required. | No objection certificate obtained | Nil               |
|  | PDP:09 (Expansion) Rehabilitation of Char colony BC road from RHD to Town hall bridge approach west side of stadium by BC in ward no-01 (Ch.0+ 00 to Ch.1124.00m)   | Mr.Ruhul, Latif, Anis, Monu,Jalil,Delwar, Lamia, Shohag & Rustom.Barguna                                  | 18 trees will be affected                   | -                | Payment not required. | No objection certificate obtained | Nil               |
| Barguna.<br>UGIIP-II-2/BARG-<br>UT-03/2012<br>(Contd.) | PDP:14 Improvement of Sadar road to Abul Talukder house via Telegram Office in ward no-01 (Ch.0+ 00 to 165.00m)   | Mr.Monir,Enamul,Basir,Samima,Ahad,Kiron,Forkan&Hares Barguna  | 10 trees will be affected                   | -                | Payment not required. | No objection certificate obtained | Nil               |
| Bhanga<br>UGIIP-II-3/BHAN-<br>MF-03/2012               | PDP:1(03) Improvement of road from Nurpur Bazar Bhatipara Highway via Hazrahati road by Bituminous carpeting.   | Mr.Taleb,Wadud,Pazam,Firoz,Shahed,AkamIdu&Ibrahim Bhanga  | 38 trees & a stair will be affected         | -                | Payment not required. | No objection certificate obtained | Nil               |
| Madaripur<br>UGIIP-II-<br>3/MADAR-UT-<br>03/2012       | PDP -138: Rehabilitation of Fazlur Rahman Khan Sarak starting from RHD road to Charmuguria - Madaripur Old road (ch0.00m to ch1230.00m)   | Mrs,Alea,Mr.Banum, Kabir&Shaalam Madaripur.   | 15 no. private owned trees will be affected | -                | Payment not required. | No objection certificate obtained | Nil               |

| INFORMATION ON AFFECTED PERSONS                           |   |  |   |                  |                       |                                   |                   |
|---|---|--|---|------------------|-----------------------|-----------------------------------|-------------------|
| Pourashava/<br>Package No.                                | Description of the Project  | Name and Address<br>of the Affected<br>person  | Type of Loss                                      | Amount in<br>TK. | Payment<br>Status     | Remark                            | Pending<br>Action |
| Madaripur<br>UGIIP-II-<br>3/MADAR-UT-<br>03/2012 (Contd.) | PDP -84:Improvement of the Baitul Noor Jame Masjid road starting from Moulavi Asmat Ali Khan sarak to Lt. Faruque Sarak (ch 0.00m to ch 445.00m)                                | Mr.Sirazul,Amena,Shobhan&Faruk Madaripur   | 20 no. private owned trees will be affected       | -                | Payment not required. | No objection certificate obtained | Nil               |
|   | PDP -99:Improvement of the Pakdi Hazi Nur Mohammad Sarak Starting from RHD road to Charmuguria Madaripur Puraton Road (ch0.00m to 600.00m)                                      | Mr.Habib,Sirazul, Manan & Shaalm Madaripur   | 10 no. private owned trees will be affected       | -                | Payment not required. | No objection certificate obtained | Nil               |
| Gopalgonj<br>UGIIP-II-<br>3/GOPAL-UT-<br>03/2012          | RD-03: Estimate for Improvement of Udayan Road Starting from BB Road near Judge Court to Public Hall via Gohata Bridge by Bituminous Carpeting (Ch 00.00m-1620.00m)             | Mr.Obaidur,Nasir,Nizam,Wahida,Khadiza, Ilias,Mitu,Rubel,Tipu, Mamun,Humayun,& Ruhul Gopalgonj    | 10 no. private owned trees will be affected       | -                | Payment not required. | No objection certificate obtained | Nil               |
|   | RD-04: Estimate for Improvement of Chachaniakandi Road Starting from Mandartala Road to Kalidas hira House via Dhaka-Khulna Bypass by Bituminous Carpeting (Ch 00.00m-1020.00m) | Mr.Mukunda, Sunil, Barendra,Titas & Nikhil, Gopalgonj  | 05 no. private owned trees will be affected       | -                | Payment not required. | No objection certificate obtained | Nil               |
|   | RD-06: Estimate for Const. of HBB Road starting from Sonakur Road to Charsonakur Shortcorse Madrasha (Ch 00-270m)   | Mr,Zane Alam ,Nazmul, Badrul, Rehena, Tariqul, Munir, Samsu, Yousuf, Zabbar & Kalamia, Gopalgonj | 09 no. private owned trees will be affected       | -                | Payment not required. | No objection certificate obtained | Nil               |
| Gopalgonj<br>UGIIP-II-<br>3/GOPAL-UT-<br>03/2012 (Contd.) | DR-02: Const. of Moulovipara RCC Drain starting from Bitul Kobra Jame Mosque to Rasid House (Ch 0.00m-450.00m)  | Mr,Omar,Mizan,Bela et,Ilias,Samsul,Miska t,Chunnu,Kaium,Anu ,Zamal,Siraz,Yousuf &Jual Gopalgonj  | 11 no. private owned trees will be affected       | -                | Payment not required. | No objection certificate obtained | Nil               |
|   | DR-03: Const. of Charnarayandia bylane RCC drain starting from Babul Kazi house to Ebadat house (Ch 0.00m-400.00m) link upto Saidur Rahaman House (Ch 0.00m-70.00m)             | Mr,Shahadat, Rani, , Gourango, Khabir, Ratan,Tapan,Mostak & Dilip, Gopalgonj                     | Sunil 17 no. private owned trees will be affected | -                | Payment not required. | No objection certificate obtained | Nil               |

| INFORMATION ON AFFECTED PERSONS                |   |  |  |                  |                          |   |                         |
|--|---|--|--|------------------|--------------------------|---|-------------------------|
| Pourashava/<br>Package No.                     | Description of the Project  | Name and Address<br>of the Affected<br>person  | Type of Loss   | Amount in<br>TK. | Payment<br>Status        | Remark  | Pending<br>Action       |
| Hajigonj<br>UGIIP-II-3/HAJI-<br>UT-03/2012     | PDP-05; Construction of RCC Drain at Mokimabad Fire Service Station road  | Mr.Lalu Mial, Ismail,<br>& Munir, Haziganj   | Brick made<br>boundary wall will be<br>affected  | -                | Payment not<br>required. | No objection<br>certificate obtained            | <b>SRP<br/>Prepared</b> |
| Munshiganj<br>UGIIP-II-3/MUNS-<br>UT-02/2012   | PDP 50:Rehabilitation of road and<br>Construction of road side drain from<br>Munshiganj Dyke to Ramjan Beg<br>Culvert via Sentu Councilor SB. House<br>(Ch.0-1110m) and Link Khankasarif<br>road (Ch.0-240m), Drain Ch.500<br>PDP 54:Construction of road from Uttar<br>Islampur end of CC road near Pathan<br>Bari to Farazibari Ghat (Ch.0-235m). | Mr.Nuru Mia<br>Vill: Munshir Hat<br>Munshiganj.  | 1no. private owned<br>tree & cow shed (Tin<br>made)  | Tk 13000/-.      |                          | No objection<br>certificate not yet<br>obtained | <b>SRP<br/>Prepared</b> |
|  |   | Mr.Liton Pathan<br>Mr.Akkash Ali<br>Mr.Ashrafuddin<br>Vill:Uttar Islampur<br>Munshiganj. | 1no. private owned<br>trees, 2 boundary<br>fence (Tin & Bamboo<br>made) and one<br>pucca boundary wall | Tk 41,450/-.     |                          | No objection<br>certificate not yet<br>obtained |                         |
| Cox's Bazar<br>UGIIP-II-3/COX'S-<br>UT-02/2012 | PDP-9: Construction of RCC road<br>Starting from Kolatoli Main Road to<br>Saikat Para Hotel Motel Zone with Brick<br>Drain & 3 nos. of Cross-Drain. Ch.<br>0.00-370.00  | Master Abul Hossain<br>Sadar Cox's Bazar   | 1no. private owned<br>trees  | Tk 8,470/-.      |                          | No objection<br>certificate not yet<br>obtained | <b>SRP<br/>Prepared</b> |
| Bandarban<br>UGIIP-II-3/BAND-<br>UT-02/2012    | Construction of HBB Road from<br>Rowanchari main road to fancygona &<br>Nandan Kanan Road. (Ch.0.00-200m)<br>& (Ch.0.00-120m)   | Mr. Ajit Kanti Das<br>Ward no-03.,<br>Bandarban  | 3noS. private owned<br>trees   | Tk 18,150/-.     |                          | No objection<br>certificate<br>obtained         | <b>SRP<br/>Prepared</b> |
| Khagrachari<br>UGIIP-II-3/KHAG-<br>UT-02/2012  | Widening and rehabilitation of P.D.B<br>Road via M.P's bridge to Govt high<br>school.   | Mr.N.Chakma,<br>Probat Chakma,<br>Santi Tripura &<br>Khabongpuria<br>Khagrachari         | Boundary wall &<br>gate affected.  | -                | Payment not<br>required. | No objection<br>certificate obtained            | Nil                     |
|  | Repairing & maintenance work of<br>Mollah para road   | Md.Aulad, Zakir,<br>Mizanur-Molla Para.<br>Khagrachari                                   | Boundary wall &<br>gate affected.  | -                | Payment not<br>required. | No objection<br>certificate obtained            | Nil                     |
|  | Construction Of HBB Road at<br>Rupnagar Area.   | Baby Talukder, Ayub<br>driver, Sirajulla,<br>Akhter, Rupnagar,<br>Khagrachari            | Boundary wall<br>affected.   | -                | Payment not<br>required. | No objection<br>certificate obtained            | Nil                     |
|  | Widening of Road and constriction of<br>Drain at Master Para  | Ajit Kanti Masterpara<br>Khagrachari   | Boundary wall<br>affected.   | -                | Payment not<br>required. | No objection<br>certificate obtained            | Nil                     |
|  | Improvement of road by HBB at<br>Salbagan Kali Mondir   | Bimal Kanti Chakma,<br>Ratan Sen.Madupur,<br>Khagrachari                                 | Boundary wall<br>affected.   | -                | Payment not<br>required. | No objection<br>certificate obtained            | Nil                     |

| INFORMATION ON AFFECTED PERSONS           |  |  |   |                  |                          |                                      |                   |
|---|--|--|---|------------------|--------------------------|--------------------------------------|-------------------|
| Pourashava/<br>Package No.                | Description of the Project   | Name and Address<br>of the Affected<br>person  | Type of Loss  | Amount in<br>TK. | Payment<br>Status        | Remark                               | Pending<br>Action |
| SECTOR – DRAINAGE                         |  |  |   |                  |                          |                                      |                   |
| KfW Component                             |  |  |   |                  |                          |                                      |                   |
| KURIGRAM<br>UGIIP-II-3KURI-<br>DR-01/2012 | Construction of R.C.C drain Mazi para at Bairagir bazar to culvert.              | S.CDas,Majid,S.Das,<br>Nogendra,Suresh,Ho<br>renda Das<br>Ward-7,Kurigram                | Boundary wall (Tin<br>made)                               | -                | Payment not<br>required. | No objection<br>certificate obtained | Nil               |
|   | Construction of R.C.C drain from old station Munshipara M U House to Jaher shop. | Rashed,Islam,Imran,<br>Aminul,Afsar,Monju,<br>Fatik,Manik etc.<br>Ward-6,Kurigram        | Boundary wall (Tin<br>made& bamboo<br>made part of house) | -                | Payment not<br>required. | No objection<br>certificate obtained | Nil               |
|   | Construction of R.C.C drain from Kalibakshi moor to House of Bablu               | Tafiz,Tofazzal,Taslim<br>,Tiub,Zahir,Kasim,M<br>azid,Nabi etc<br>Ward-5,Kurigram.        | 6nos trees and a<br>gate                                  | -                | Payment not<br>required. | No objection<br>certificate obtained | Nil               |
|   | Construction of R.C.C drain from Pathan para to East side of Palash Bari.        | Hemanto,Mozammel<br>,N.mohammad,Hoss<br>ain,Nur Islam etc<br>Ward-4,Kurigram             | 7 no's trees  | -                | Payment not<br>required. | No objection<br>certificate obtained | Nil               |
|   | Construction of R.C.C drain from Prof;House to East side of Palash Bari.         | Mazid,Mizan,Ershad,<br>Saiful,Zakaria,Kalam<br>,Ojit,rahamat,Hai etc<br>Ward-4,Kurigram. | 4nos trees and a<br>gate                                  | -                | Payment not<br>required. | No objection<br>certificate obtained | Nil               |

## **ENVIRONMENTAL SAFEGUARDS**

**Second Urban Governance & Infrastructure Improvement (Sector) Project (UGIIP-II) – Phase 2**  
**SECTOR SUB PROJECT WISE ENVIRONMENTAL SAFEGUARD ASSESSMENT STATUS AS ON 31/12/2013**

| Sl. No            | Pourashava | Road          |    | IEE Report | Water Supply  |   | IEE Report | Drainage      |    | IEE Report | Solid Waste Mgmt. |   | IEE Report | Sanitation    |   | IEE Report | Municipal facility |    | IEE Report |
|-------------------|------------|---------------|----|------------|---------------|---|------------|---------------|----|------------|-------------------|---|------------|---------------|---|------------|--------------------|----|------------|
|                   |            | No of Pkg/Sch |    |            | No of Pkg/Sch |   |            | No of Pkg/Sch |    |            | No of Pkg/Sch     |   |            | No of Pkg/Sch |   |            | No of Pkg/Sch      |    |            |
|                   |            | P             | S  |            | P             | S |            | P             | S  |            | P                 | S |            | P             | S |            | P                  | S  |            |
| Sylhet Division   |            |               |    |            |               |   |            |               |    |            |                   |   |            |               |   |            |                    |    |            |
| 1                 | Sunamganj  | 4             | 29 | Submitted  | 1             | 1 | Submitted  | 1             | 4  | Submitted  |                   |   |            | 1             | 2 | Submitted  | 1                  | 11 | Submitted  |
| 2                 | Srimangal  | 3             | 8  | Submitted  | 1             | 2 | Submitted  | 1             | 10 | Submitted  | 1                 | 3 | Submitted  |               |   |            | 1                  | 2  | Submitted  |
| 3                 | Golapganj  | 1             | 4  | Submitted  | 1             | 1 | Submitted  | 2             | 14 | Submitted  |                   |   |            |               |   |            | 2                  | 6  | Submitted  |
| Dhaka Division    |            |               |    |            |               |   |            |               |    |            |                   |   |            |               |   |            |                    |    |            |
| 1                 | Sreepur    | 6             | 7  | Submitted  | 1             | 1 | Submitted  | 2             | 3  | Submitted  | 1                 | 1 | Submitted  | 1             | 4 | Submitted  | 1                  | 12 | Submitted  |
| 2                 | Mirzapur   | 3             | 12 | Submitted  | 1             | 1 | Submitted  | 2             | 2  | Submitted  |                   |   |            |               |   |            |                    |    |            |
| 3                 | Ghorashal  | 8             | 23 | Submitted  |               |   |            | 1             | 2  | Submitted  |                   |   |            | 1             | 2 | Submitted  | 1                  | 6  | Submitted  |
| 4                 | Munshiganj | 7             | 24 | Submitted  |               |   |            | 1             | 5  | Submitted  | 1                 | 2 | Submitted  | 1             | 3 | Submitted  | 1                  | 4  | Submitted  |
| 5                 | Jamalpur   | 9             | 25 | Submitted  |               |   |            | 2             | 9  | Submitted  | 1                 | 4 | Submitted  | 1             | 1 | Submitted  | 3                  | 4  | Submitted  |
| 6                 | Mymensingh | 6             | 11 | Submitted  |               |   |            | 2             | 6  | Submitted  |                   |   |            |               |   |            | 1                  | 2  | Submitted  |
| 7                 | Bhanga     | 5             | 14 | Submitted  |               |   |            | 1             | 6  | Submitted  |                   |   |            | 1             | 1 | Submitted  | 1                  | 2  | Submitted  |
| 8                 | Faridpur   | 6             | 23 | Submitted  |               |   |            | 3             | 7  | Submitted  | 1                 | 2 | Submitted  | 1             | 1 | Submitted  | 3                  | 5  | Submitted  |
| Khulna Division   |            |               |    |            |               |   |            |               |    |            |                   |   |            |               |   |            |                    |    |            |
| 1                 | Jhenaidah  | 8             | 37 | Submitted  |               |   |            | 2             | 2  | Submitted  | 1                 | 4 | Submitted  | 1             | 3 | Submitted  | 2                  | 14 | Submitted  |
| 2                 | Narail     | 8             | 34 | Submitted  |               |   |            | 1             | 3  | Submitted  | 1                 | 2 | Submitted  | 1             | 1 | Submitted  | 1                  | 4  | Submitted  |
| 3                 | Benapole   | 4             | 8  | Submitted  |               |   |            | 3             | 3  | Submitted  |                   |   |            |               |   |            | 1                  | 1  | Submitted  |
| 4.                | Satkhira   | 7             | 40 | Submitted  | 1             | 4 | Submitted  | 1             | 9  | Submitted  | 2                 | 4 | Submitted  | 1             | 4 | Submitted  | 2                  | 5  | Submitted  |
| 5.                | Bagerhat   | 7             | 18 | Submitted  | 1             | 6 | Submitted  | 1             | 2  | Submitted  |                   |   |            | 1             | 2 | Submitted  | 1                  | 1  | Submitted  |
| Barishal Division |            |               |    |            |               |   |            |               |    |            |                   |   |            |               |   |            |                    |    |            |
| 1                 | Jhalakati  | 7             | 13 | Submitted  |               |   |            | 1             | 6  | Submitted  | 1                 | 1 | Submitted  | 1             | 1 | Submitted  | 1                  | 10 | Submitted  |
| 2                 | Bhola      | 9             | 35 | Submitted  |               |   |            | 1             | 5  | Submitted  | 1                 | 6 | Submitted  |               |   |            |                    |    |            |
| 3                 | Barguna    | 6             | 39 | Submitted  |               |   |            | 2             | 16 | Submitted  | 1                 | 2 | Submitted  | 1             | 4 | Submitted  | 2                  | 4  | Submitted  |
| 4.                | Kolapara   | 3             | 10 | Submitted  | 1             | 1 | Submitted  | 1             | 7  | Submitted  |                   |   |            | 1             | 1 | Submitted  |                    |    |            |

| Sl. No              | Pourashava   | Road          |    |            | Water Supply  |   |            | Drainage      |    |            | Solid Waste   |    |            | Sanitation    |   |            | Municipal facility |    |           |
|---------------------|--------------|---------------|----|------------|---------------|---|------------|---------------|----|------------|---------------|----|------------|---------------|---|------------|--------------------|----|-----------|
|                     |              | No of Pkg/Sch |    | IEE Report | No of Pkg/Sch |   | IEE Report | No of Pkg/Sch |    | IEE Report | No of Pkg/Sch |    | IEE Report | No of Pkg/Sch |   | IEE Report | No of Pkg/Sch      |    |           |
|                     |              | P             | S  |            | P             | S |            | P             | S  |            | P             | S  |            | P             | S |            | P                  | S  |           |
| Rajshahi Division   |              |               |    |            |               |   |            |               |    |            |               |    |            |               |   |            |                    |    |           |
| 1                   | Thakugaon    | 10            | 33 | Submitted  |               |   |            | 3             | 5  | Submitted  |               |    |            | 1             | 2 | Submitted  | 1                  | 8  | Submitted |
| 2                   | Kurigram     | 7             | 68 | Submitted  |               |   |            | 2             | 11 | Submitted  | 1             | 3  | Submitted  |               |   |            | 1                  | 2  | Submitted |
| 3                   | Rangpur      | 8             | 44 | Submitted  |               |   |            | 3             | 5  | Submitted  |               |    |            | 1             | 1 | Submitted  |                    |    |           |
| 4                   | Dinajpur     | 6             | 27 | Submitted  |               |   |            | 3             | 9  | Submitted  | 1             | 20 | Submitted  | 1             | 5 | Submitted  | 2                  | 14 | Submitted |
| 5                   | Gaibandha    | 7             | 42 | Submitted  |               |   |            | 1             | 8  | Submitted  |               |    |            |               |   |            | 4                  | 6  | Submitted |
| 6                   | Natore       | 12            | 84 | Submitted  |               |   |            | 1             | 10 | Submitted  |               |    |            |               |   |            |                    |    |           |
| 7                   | Sirajganj    | 3             | 20 | Submitted  |               |   |            | 1             | 1  | Submitted  | 1             | 3  | Submitted  |               |   |            | 2                  | 5  | Submitted |
| 8                   | Nachol       | 2             | 5  | Submitted  | 1             | 2 | Submitted  | 1             | 3  | Submitted  |               |    |            |               |   |            | 1                  | 5  | Submitted |
| Chittagong Division |              |               |    |            |               |   |            |               |    |            |               |    |            |               |   |            |                    |    |           |
| 1                   | Brahmanbaria | 8             | 31 | Submitted  |               |   |            | 1             | 10 | Submitted  |               |    |            |               |   |            | 1                  | 2  | Submitted |
| 2                   | Comilla      | 7             | 14 | Submitted  |               |   |            | 1             | 9  | Submitted  | 2             | 2  | Submitted  | 1             | 3 | Submitted  |                    |    |           |
| 3                   | Chandpur     | 7             | 30 | Submitted  |               |   |            | 1             | 11 | Submitted  | 2             | 7  | Submitted  | 1             | 4 | Submitted  | 1                  | 1  | Submitted |
| 4                   | Parshuram    | 4             | 24 | Submitted  | 1             | 1 | Submitted  | 1             | 1  | Submitted  |               |    |            |               |   |            |                    |    |           |
| 5                   | Noakhali     | 3             | 19 | Submitted  |               |   |            | 3             | 8  | Submitted  | 2             | 2  | Submitted  | 1             | 2 | Submitted  | 1                  | 14 | Submitted |
| 6                   | Chowmuhani   | 9             | 22 | Submitted  |               |   |            | 1             | 6  | Submitted  |               |    |            | 1             | 1 | Submitted  | 1                  | 6  | Submitted |
| 7                   | Cox's Bazar  | 3             | 7  | Submitted  |               |   |            | 1             | 1  | Submitted  |               |    |            |               |   |            |                    |    |           |



**Second Urban Governance & Infrastructure Improvement (Sector) Project (UGIIP-II) – Phase 3**  
**SECTOR SUB PROJECT WISE SOCIAL SAFEGUARD ASSESSMENT STATUS AS ON 31/10/2013**

| Sl. No          | Pourashava    | Road          |            | Water Supply  |            | Drainage      |            | Solid Waste Mgmt. |            | Sanitation    |            | Municipal facility |            |
|-----------------|---------------|---------------|------------|---------------|------------|---------------|------------|-------------------|------------|---------------|------------|--------------------|------------|
|                 |               | No of Schemes | IEE Report | No of Schemes | IEE Report | No of Schemes | IEE Report | No of Schemes     | IEE Report | No of Schemes | IEE Report | No of Schemes      | IEE Report |
| Sylhet Division |               |               |            |               |            |               |            |                   |            |               |            |                    |            |
| 1               | Sunamganj     | 8             | Submitted  |               |            |               |            |                   |            |               |            |                    |            |
| 2               | Srimangal     | 3             | Submitted  |               |            |               |            |                   |            |               |            |                    |            |
| 3               | Golapganj     | 4             | Submitted  |               |            |               |            |                   |            |               |            |                    |            |
| 4               | Brahman Baria | 15            | Submitted  |               |            |               |            |                   |            |               |            |                    |            |
| 5               | Madhabpur     | 5             | Submitted  |               |            |               |            |                   |            |               |            |                    |            |
| Dhaka Division  |               |               |            |               |            |               |            |                   |            |               |            |                    |            |
| 1               | Sreepur       | 2             | Submitted  |               |            |               |            |                   |            |               |            |                    |            |
| 2               | Mirzapur      | 6             | Submitted  |               |            |               |            |                   |            |               |            | 1                  | Submitted  |
| 3               | Ghorashal     | 9             | Submitted  |               |            |               |            |                   |            |               |            |                    |            |
| 4               | Munshiganj    | 9             | Submitted  |               |            |               |            |                   |            |               |            |                    |            |
| 5               | Jamalpur      | 21            | Submitted  |               |            |               |            |                   |            |               |            | 2*                 |            |
| 6               | Mymensingh    | 14            | Submitted  |               |            |               |            |                   |            |               |            |                    |            |
| 7               | Bhanga        | 4             | Submitted  |               |            |               |            |                   |            |               |            | 1                  | Submitted  |
| 8               | Faridpur      | 19            | Submitted  |               |            |               |            |                   |            |               |            |                    |            |
| 9               | Dhanbari      | 12            | Submitted  |               |            |               |            |                   |            |               |            |                    |            |
| 10              | Madaripur     | 12            | Submitted  |               |            |               |            |                   |            |               |            |                    |            |
| 11              | Gopalganj     | 16            | Submitted  |               |            |               |            |                   |            |               |            |                    |            |
| Khulna Division |               |               |            |               |            |               |            |                   |            |               |            |                    |            |
| 1               | Jhenaidah     | 23            | Submitted  |               |            |               |            |                   |            |               |            |                    |            |
| 2               | Narail        | 15            | Submitted  |               |            |               |            |                   |            |               |            |                    |            |
| 3               | Benapole      | 7             | Submitted  |               |            | 2             | Submitted  |                   |            |               |            |                    |            |
| 4.              | Satkhira      | 7             | Submitted  |               |            |               |            |                   |            |               |            |                    |            |
| 5.              | Kustia        | 11            | Submitted  |               |            |               |            |                   |            |               |            |                    |            |
| 6               | Chuadanga     | 16            | Submitted  |               |            | 7             | Submitted  |                   |            |               |            |                    |            |

| Sl. No              | Pourashava  | Road          |            | Water Supply  |            | Drainage      |            | Solid Waste   |            | Sanitation    |            | Municipal facility |            |
|---------------------|-------------|---------------|------------|---------------|------------|---------------|------------|---------------|------------|---------------|------------|--------------------|------------|
|                     |             | No of Schemes | IEE Report | No of Schemes | IEE Report | No of Schemes | IEE Report | No of Schemes | IEE Report | No of Schemes | IEE Report | No of Schemes      | IEE Report |
| Barishal Division   |             |               |            |               |            |               |            |               |            |               |            |                    |            |
| 1                   | Jhalakati   | 6             | Submitted  |               |            | 3             | Submitted  |               |            |               |            |                    |            |
| 2                   | Bhola       | 15            | Submitted  |               |            |               |            |               |            |               |            |                    |            |
| 3                   | Barguna     | 9             | Submitted  |               |            |               |            |               |            |               |            |                    |            |
| 4.                  | Kolapara    | 6             | Submitted  |               |            |               |            |               |            |               |            |                    |            |
| 5                   | Lalmohan    | 16            | Submitted  |               |            |               |            |               |            |               |            |                    |            |
| 6                   | Patuakhali  | 11            | Submitted  |               |            |               |            |               |            |               |            |                    |            |
| Rajshahi Division   |             |               |            |               |            |               |            |               |            |               |            |                    |            |
| 1                   | Thakugaon   | 25            | Submitted  |               |            |               |            |               |            |               |            |                    |            |
| 2                   | Kurigram    | 09            | Submitted  |               |            | 20            | Submitted  |               |            |               |            |                    |            |
| 3                   | Gaibandha   | 20            | Submitted  |               |            |               |            |               |            |               |            |                    |            |
| 4                   | Natore      | 26            | Submitted  |               |            |               |            |               |            |               |            |                    |            |
| 5                   | Sirajganj   | 8             | Submitted  |               |            |               |            |               |            |               |            | 1*                 |            |
| 6                   | Nachol      | 5             | Submitted  |               |            |               |            |               |            |               |            |                    |            |
| 7                   | Nilphamari  | 38            | Submitted  |               |            |               |            |               |            |               |            | 1*                 |            |
| 8                   | Kakonhat    | 6             | Submitted  |               |            |               |            |               |            |               |            |                    |            |
| 9                   | Pabna       | 9             | Submitted  |               |            |               |            |               |            |               |            |                    |            |
| 10                  | Patgram     | 13            | Submitted  |               |            |               |            |               |            |               |            | 1                  | Submitted  |
| Chittagong Division |             |               |            |               |            |               |            |               |            |               |            |                    |            |
| 1                   | Chandpur    | 17            | Submitted  |               |            |               |            |               |            |               |            |                    |            |
| 2                   | Parshuram   | 16            | Submitted  |               |            |               |            |               |            |               |            |                    |            |
| 3                   | Noakhali    | 8             | Submitted  |               |            |               |            |               |            |               |            |                    |            |
| 4                   | Chowmuhani  | 22            | Submitted  |               |            |               |            |               |            |               |            |                    |            |
| 5                   | Cox's Bazar | 10            | Submitted  |               |            |               |            |               |            |               |            |                    |            |
| 6                   | Haziganj    | 11            | Submitted  |               |            | 8             | Submitted  |               |            |               |            |                    |            |
| 7                   | Basurhat    | 8             | Submitted  |               |            |               |            |               |            |               |            |                    |            |
| 8                   | Bandarban   | 18            | Submitted  |               |            |               |            |               |            |               |            |                    |            |
| 9                   | Khagrachari | 13            | Submitted  |               |            |               |            |               |            |               |            |                    |            |

Note: \* indicates visits for screening of the proposed schemes completed

**EMP Compliance Status UGIP-II Phase-2 as on 31<sup>ST</sup> December, 2013**

**A) Urban Transport**

| SL No                      | Name of Pourashava | Measure proposed in EMP                              | EMP compliance status   | Remarks   | EMP Health & safety Compliance status |
|----------------------------|--------------------|--|-------------------------|---|---------------------------------------|
| <b>Sylhet Division</b>     |                    |  |                         |   |                                       |
| 1                          | Sunamganj          | Plantation along the road and Training, workshop etc | Moderately satisfactory | Training completed by PMO plantation done by pourashava         | Satisfactory                          |
| 2                          | Srimangal          | Training workshop etc                                | Satisfactory            | Training completed by PMO                                       | Satisfactory                          |
| 3                          | Golapganj          | Plantation along the road and Training, workshop etc | Moderately satisfactory | Training completed by PMO plantation done by pourashava         | Satisfactory                          |
| 4                          | Brahmanbaria       | Training workshop etc                                | Satisfactory            | Training completed by PMO                                       | Satisfactory                          |
| <b>Dhaka Division</b>      |                    |  |                         |   |                                       |
| 1                          | Sreepur            | Plantation along the road and Training, workshop etc | Moderately satisfactory | Training completed by PMO plantation done by pourashava         | Satisfactory                          |
| 2                          | Mirzapur           | Plantation along the road and Training, workshop etc | Moderately satisfactory | Training completed by PMO plantation done by pourashava         | Satisfactory                          |
| 3                          | Ghorashal          | Plantation along the road and Training, workshop etc | Moderately satisfactory | Training completed by PMO plantation done by pourashava         | Satisfactory                          |
| 4                          | Munshiganj         | Training workshop etc                                | Satisfactory            | Training completed by PMO                                       | Satisfactory                          |
| 5                          | Jamalpur           | Plantation along the road and Training, workshop etc | Satisfactory            | Training completed by PMO                                       | Satisfactory                          |
| 6                          | Mymensingh         | Training workshop etc                                | Satisfactory            | Training completed by PMO                                       | Satisfactory                          |
| 7                          | Bhanga             | Plantation along the road and Training, workshop etc | Moderately satisfactory | Training completed by PMO plantation done by pourashava         | Satisfactory                          |
| 8                          | Faridpur           | Plantation along the road and Training, workshop etc | Moderately satisfactory | Training completed by PMO plantation will be done by pourashava | Satisfactory                          |
| <b>Chittagong Division</b> |                    |  |                         |   |                                       |
| 1                          | Comilla            | Training workshop etc                                | Satisfactory            | Training completed by PMO                                       | Satisfactory                          |
| 2                          | Chandpur           | Training workshop etc                                | Satisfactory            | Training completed by PMO                                       | Satisfactory                          |
| 3                          | Parshuram          | Training workshop etc                                | Satisfactory            | Training completed by PMO                                       | Satisfactory                          |
| 4                          | Noakhali           | Dust suppression and Training workshop etc           | Satisfactory            | Training completed by PMO                                       | Satisfactory                          |
| 5                          | Chowmuhani         | Dust suppression and Training workshop etc           | Satisfactory            | Training completed by PMO                                       | Satisfactory                          |
| 6                          | Cox's Bazar        | Training workshop etc                                | Satisfactory            | Training completed by PMO                                       | Satisfactory                          |
| <b>Khulna Division</b>     |                    |  |                         |   |                                       |
| 1                          | Jhenaidah          | Plantation along the road and Training, workshop etc | Moderately satisfactory | Training completed by PMO                                       | Satisfactory                          |
| 2                          | Narail             | Plantation along the road and Training, workshop etc | Moderately satisfactory | Training completed by PMO                                       | Satisfactory                          |
| 3                          | Benapole           | Plantation along the road and Training, workshop etc | Moderately satisfactory | Training completed by PMO                                       | Satisfactory                          |
| 4                          | Satkhira           | Plantation along the road and Training, workshop etc | Moderately satisfactory | Training completed by PMO                                       | Satisfactory                          |
| 5                          | Bagerhat           | Plantation along the road and Training, workshop etc | Moderately satisfactory | Training completed by PMO plantation done by pourashava         | Satisfactory                          |
| <b>Rajshahi Division</b>   |                    |  |                         |   |                                       |
| 1                          | Thakugaon          | Training workshop etc                                | Satisfactory            | Training completed by PMO                                       | Satisfactory                          |
| 2                          | Kurigram           | Plantation along the road and                        | Satisfactory            | Training completed by PMO                                       | Satisfactory                          |

| SL No                   | Name of Pourashava | Measure proposed in EMP                              | EMP compliance status   | Remarks   | EMP Health & safety Compliance status |
|-------------------------|--------------------|--|-------------------------|---|---------------------------------------|
|                         |                    | Training, workshop etc                               |                         |   |                                       |
| 3                       | Rangpur            | Training workshop etc                                | Satisfactory            | Training completed by PMO                                       | Satisfactory                          |
| 4                       | Dinajpur           | Training workshop etc                                | Satisfactory            | Training completed by PMO                                       | Satisfactory                          |
| 5                       | Gaibandha          | Plantation along the road and Training, workshop etc | Moderately satisfactory | Training completed by PMO plantation done by pourashava         | Satisfactory                          |
| 6                       | Natore             | Training workshop etc                                | Satisfactory            | Training completed by PMO                                       | Satisfactory                          |
| 7                       | Sirajganj          | Training workshop etc                                | Satisfactory            | Training completed by PMO                                       | Satisfactory                          |
| 8                       | Nachol             | Plantation along the road and Training, workshop etc | Moderately satisfactory | Training completed by PMO plantation will be done by pourashava | Satisfactory                          |
| <b>Barisal Division</b> |                    |  |                         |   |                                       |
| 1                       | Jhalokati          | Plantation along the road and Training, workshop etc | Moderately satisfactory | Training completed by PMO plantation done by pourashava         | Satisfactory                          |
| 2                       | Bhola              | Plantation along the road and Training, workshop etc | Moderately satisfactory | Training completed by PMO plantation                            | Satisfactory                          |
| 3                       | Barguna            | Plantation along the road and Training, workshop etc | Moderately satisfactory | Training completed by PMO plantation will be done by pourashava | Satisfactory                          |
| 4                       | Kolapara           | Plantation along the road and Training, workshop etc | Moderately satisfactory | Training completed by PMO plantation done by pourashava         | Satisfactory                          |

#### Drainage

| SL No                      | Name of Pourashava | Measure proposed in EMP | EMP compliance status   | Remarks                   | EMP Health & safety Compliance status |
|----------------------------|--------------------|-------------------------|-------------------------|---------------------------|---------------------------------------|
| <b>Sylhet Division</b>     |                    |                         |                         |                           |                                       |
| 1                          | Sunamganj          | Training, workshop etc  | Satisfactory            | Training completed by PMO | Satisfactory                          |
| 2                          | Srimangal          | Training workshop etc   | Satisfactory            | Training completed by PMO | Satisfactory                          |
| 3                          | Golapganj          | Training, workshop etc  | Satisfactory            | Training completed by PMO | Satisfactory                          |
| 4                          | Brahmanbaria       | Training, workshop etc  | Satisfactory            | Training completed by PMO | Satisfactory                          |
| <b>Dhaka Division</b>      |                    |                         |                         |                           |                                       |
| 1                          | Sreepur            | Training, workshop etc  | Satisfactory            | Training completed by PMO | Satisfactory                          |
| 2                          | Mirzapur           | Training, workshop etc  | Moderately satisfactory | Training completed by PMO | Satisfactory                          |
| 3                          | Ghorashal          | Training, workshop etc  | Satisfactory            | Training completed by PMO | Satisfactory                          |
| 4                          | Munshiganj         | Training, workshop etc  | Satisfactory            | Training completed by PMO | Satisfactory                          |
| 5                          | Jamalpur           | Training, workshop etc  | Satisfactory            | Training completed by PMO | Satisfactory                          |
| 6                          | Mymensingh         | Training, workshop etc  | Satisfactory            | Training completed by PMO | Satisfactory                          |
| 7                          | Bhanga             | Training, workshop etc  | Satisfactory            | Training completed by PMO | Satisfactory                          |
| 8                          | Faridpur           | Training, workshop etc  | Satisfactory            | Training completed by PMO | Satisfactory                          |
| <b>Chittagong Division</b> |                    |                         |                         |                           |                                       |
| 1                          | Comilla            | Training, workshop etc  | Satisfactory            | Training completed by PMO | Satisfactory                          |
| 2                          | Chandpur           | Training, workshop etc  | Satisfactory            | Training completed by PMO | Satisfactory                          |
| 3                          | Parshuram          | Training, workshop etc  | Satisfactory            | Training completed by PMO | Satisfactory                          |
| 4                          | Noakhali           | Training, workshop etc  | Not yet started         |                           |                                       |
| 5                          | Chowmuhani         | Training, workshop etc  | Satisfactory            | Training completed by PMO | Satisfactory                          |

| SL No                    | Name of Pourashava | Measure proposed in EMP | EMP compliance status   | Remarks                   | EMP Health & safety Compliance status |
|--------------------------|--------------------|-------------------------|-------------------------|---------------------------|---------------------------------------|
| 6                        | Cox's Bazar        | Training, workshop etc  | Satisfactory            | Training completed by PMO | Satisfactory                          |
| <b>Khulna Division</b>   |                    |                         |                         |                           |                                       |
| 1                        | Jhenaidah          | Training, workshop etc  | Moderately satisfactory | Training completed by PMO | Satisfactory                          |
| 2                        | Narail             | Training, workshop etc  | Moderately satisfactory | Training completed by PMO | Satisfactory                          |
| 3                        | Benapole           | Training, workshop etc  | Moderately satisfactory | Training completed by PMO | Satisfactory                          |
| 4                        | Satkhira           | Training, workshop etc  | Moderately satisfactory | Training completed by PMO | Satisfactory                          |
| 5                        | Bagerhat           | Training, workshop etc  | Moderately satisfactory | Training completed by PMO | Satisfactory                          |
| <b>Rajshahi Division</b> |                    |                         |                         |                           |                                       |
| 1                        | Thakurgaon         | Training, workshop etc  | Satisfactory            | Training completed by PMO | Satisfactory                          |
| 2                        | Kurigram           | Training, workshop etc  | Satisfactory            | Training completed by PMO | Satisfactory                          |
| 3                        | Rangpur            | Training, workshop etc  | Satisfactory            | Training completed by PMO | Satisfactory                          |
| 4                        | Dinajpur           | Training, workshop etc  | Satisfactory            | Training completed by PMO | Satisfactory                          |
| 5                        | Gaibandha          | Training, workshop etc  | Moderately satisfactory | Training completed by PMO | Satisfactory                          |
| 6                        | Natore             | Training, workshop etc  | Satisfactory            | Training completed by PMO | Satisfactory                          |
| 7                        | Sirajganj          | Training, workshop etc  | Satisfactory            | Training completed by PMO | Satisfactory                          |
| 8                        | Nachol             | Training, workshop etc  | Moderately satisfactory | Training completed by PMO | Satisfactory                          |
| <b>Barisal Division</b>  |                    |                         |                         |                           |                                       |
| 1                        | Jhalokati          | Training, workshop etc  | Moderately satisfactory | Training completed by PMO | Satisfactory                          |
| 2                        | Bhola              | Training, workshop etc  | Moderately satisfactory | Training completed by PMO | Satisfactory                          |
| 3                        | Barguna            | Training, workshop etc  | Moderately satisfactory | Training completed by PMO | Satisfactory                          |
| 4                        | Kolapara           | Training, workshop etc  | Moderately satisfactory | Training completed by PMO | Satisfactory                          |

### C) Municipal Facilities

| SL No                  | Name of Pourashava | Measure proposed in EMP   | EMP compliance status   | Remarks  | EMP Health & safety Compliance status |
|------------------------|--------------------|---|-------------------------|--|---------------------------------------|
| <b>Sylhet Division</b> |                    |   |                         |  |                                       |
| 1                      | Sunamganj          | Plantation around market and Training workshop etc  | Not yet started         |  |                                       |
| 2                      | Srimangal          | Plantation around market and Training workshop etc  | Satisfactory            | Training completed by PMO                                    | Satisfactory                          |
| 3                      | Golapganj          |   | Not yet started         |  |                                       |
| 4                      | Brahmanbaria       |   | Nil                     |  | Nil                                   |
| <b>Dhaka Division</b>  |                    |   |                         |  |                                       |
| 1                      | Sreepur            | Plantation around the Market and Training / workshop, for Environment Health & safety etc | Moderately satisfactory | Training completed   | Satisfactory                          |
| 2                      | Mirzapur           |   | Nil                     |  |                                       |
| 3                      | Ghorashal          | Plantation around market and Training workshop etc  | Moderately satisfactory | Training completed by PMO plantation I be done by pourashava | Satisfactory                          |

| SL No                      | Name of Pourashava | Measure proposed in EMP   | EMP compliance status   | Remarks   | EMP Health & safety Compliance status |
|----------------------------|--------------------|---|-------------------------|---|---------------------------------------|
| 4                          | Munshiganj         | Plantation around market and Training workshop etc  | Moderately satisfactory | Training completed by PMO plantation will be done by pourashava | Satisfactory                          |
| 5                          | Jamalpur           | Plantation around market/ community center/ Slaughter shed and Training workshop etc                | Moderately satisfactory | Training completed by PMO plantation will be done by pourashava | Satisfactory                          |
| 6                          | Mymensingh         | Plantation around market and Training workshop etc  | Moderately satisfactory | Training completed by PMO plantation will be done by pourashava | Satisfactory                          |
| 7                          | Bhanga             | Plantation around the Market and Training / workshop, for Environment Health & safety etc           | Moderately satisfactory | Training completed by PMO plantation will be done by pourashava | Satisfactory                          |
| 8                          | Faridpur           | Training workshop etc   | Satisfactory            | Training completed by PMO                                       | Satisfactory                          |
| <b>Chittagong Division</b> |                    |   |                         |   |                                       |
| 1                          | Comilla            |   |                         | Nil   |                                       |
| 2                          | Chandpur           | Training / workshop, for Environment Health & safety etc  | Satisfactory            | Training completed by PMO                                       | Satisfactory                          |
| 3                          | Parshuram          |   | Nil                     |   | Nil                                   |
| 4                          | Noakhali           | Plantation around the Market and Training / workshop, for Environment Health & safety etc           | Moderately satisfactory | Training completed by PMO plantation will be done by pourashava | Satisfactory                          |
| 5                          | Chowmuhani         | Plantation around the Market and Training / workshop, for Environment Health & safety etc           | Moderately satisfactory | Training completed by PMO                                       | Satisfactory                          |
| 6                          | Cox's Bazar        |   | Nil                     |   | Nil                                   |
| <b>Khulna Division</b>     |                    |   |                         |   |                                       |
| 1                          | Jhenaidah          | Training / workshop, for Environment Health & safety etc  | Satisfactory            | Training completed by PMO                                       | Satisfactory                          |
| 2                          | Narail             | Training / workshop, for Environment Health & safety etc  | Satisfactory            | Training completed by PMO                                       | Satisfactory                          |
| 3                          | Benapole           | Training workshop etc   | Moderately satisfactory | Training completed by PMO plantation will be done by pourashava | Satisfactory                          |
| 4                          | Satkhira           | Plantation in the park, Slaughter shed and Training / workshop, for Environment Health & safety etc | Moderately satisfactory | Training completed by PMO plantation will be done by pourashava | Satisfactory                          |
| 5                          | Bagerhat           | Plantation around the Market and Training / workshop, for Environment Health & safety etc           | Moderately satisfactory | Training completed by PMO plantation will be done by pourashava | Satisfactory                          |
| <b>Rajshahi Division</b>   |                    |   |                         |   |                                       |
| 1                          | Thakurgaon         | Training / workshop, for Environment Health & safety etc  | Moderately satisfactory | Training completed by PMO plantation will be done by pourashava | Satisfactory                          |
| 2                          | Kurigram           | Plantation around market and Training workshop etc  | Moderately satisfactory | Training completed by PMO plantation will be done by pourashava | Satisfactory                          |

| SL No                   | Name of Pourashava | Measure proposed in EMP                                  | EMP compliance status   | Remarks   | EMP Health & safety Compliance status                    |
|-------------------------|--------------------|--|-------------------------|---|--|
| 3                       | Rangpur            |  | Nil                     |   | Nil  |
| 4                       | Dinajpur           | Training workshop etc                                    | Moderately satisfactory |   |  |
| 5                       | Gaibandha          | Training workshop etc                                    | Moderately satisfactory | Training completed by PMO plantation will be done by pourashava | Satisfactory   |
| 6                       | Natore             |  | Nil                     |   | Nil  |
| 7                       | Sirajganj          | Training workshop etc                                    | Moderately satisfactory | Training completed by PMO plantation will be done by pourashava | Satisfactory   |
| 8                       | Nachol             | Plantation around market and Training workshop etc       | Moderately satisfactory | Training completed by PMO plantation will be done by pourashava | Satisfactory   |
| <b>Barisal Division</b> |                    |  |                         |   |  |
| 1                       | Jhalokati          | Plantation around market and Training workshop etc       | Moderately satisfactory | Training completed by PMO plantation will be done by pourashava | Plantation around market and Training workshop etc       |
| 2                       | Bhola              | Training / workshop, for Environment Health & safety etc | Moderately satisfactory | Training completed by PMO plantation will be done by pourashava | Training / workshop, for Environment Health & safety etc |
| 3                       | Barguna            | Training workshop etc                                    | Moderately satisfactory | Training completed by PMO plantation will be done by pourashava | Training workshop etc                                    |
| 4                       | Kolapara           |  | Nil                     |   | Satisfactory   |

#### D) SWM

| SL No                  | Name of Pourashava | Measure proposed in EMP                                  | EMP compliance status | Remarks                   | EMP Health & safety Compliance status |
|------------------------|--------------------|--|-----------------------|---------------------------|---------------------------------------|
| <b>Sylhet Division</b> |                    |  |                       |                           |                                       |
| 1                      | Sunamganj          |  | Nil                   |                           |                                       |
| 2                      | Srimangal          | Training / workshop for Environment Health & safety etc  | Satisfactory          | Training completed by PMO | Satisfactory                          |
| 3                      | Golapganj          |  | Nil                   |                           |                                       |
| 4                      | Brahmanbaria       |  | Nil                   |                           |                                       |
| <b>Dhaka Division</b>  |                    |  |                       |                           |                                       |
| 1                      | Sreepur            | Training / workshop, for Environment Health & safety etc | Satisfactory          | Training completed by PMO | Satisfactory                          |
| 2                      | Mirzapur           |  | Nil                   |                           |                                       |
| 3                      | Ghorashal          |  | Nil                   |                           |                                       |
| 4                      | Munshiganj         | Training / workshop, for Environment Health & safety etc | Satisfactory          | Training completed by PMO | Satisfactory                          |
| 5                      | Jamalpur           | Training / workshop, for Environment Health & safety etc | Satisfactory          | Training completed by PMO | Satisfactory                          |
| 6                      | Mymensingh         |  | Nil                   |                           |                                       |
| 7                      | Bhanga             | Training / workshop, for Environment Health & safety etc | Satisfactory          | Training completed by PMO | Satisfactory                          |
| 8                      | Faridpur           | Training / workshop, for                                 | Satisfactory          | Training completed by PMO | Satisfactory                          |

| SL No                      | Name of Pourashava | Measure proposed in EMP                                  | EMP compliance status | Remarks  | EMP Health & safety Compliance status |
|----------------------------|--------------------|--|-----------------------|--|---------------------------------------|
|                            |                    | Environment Health & safety etc                          |                       |  |                                       |
| <b>Chittagong Division</b> |                    |  |                       |  |                                       |
| 1                          | Comilla            | Training / workshop, for Environment Health & safety etc | Not yet started       | Training / workshop, for Environment Health & safety etc | Not yet started                       |
| 2                          | Chandpur           | Training / workshop, for Environment Health & safety etc | Satisfactory          | Training / workshop, for Environment Health & safety etc | Satisfactory                          |
| 3                          | Parshuram          |  | Nil                   |  | Nil                                   |
| 4                          | Noakhali           | Training / workshop, for Environment Health & safety etc | Satisfactory          | Training / workshop, for Environment Health & safety etc | Satisfactory                          |
| 5                          | Chowmuhani         |  | Nil                   |  | Nil                                   |
| 6                          | Cox's Bazar        |  | Nil                   |  | Nil                                   |
| <b>Khulna Division</b>     |                    |  |                       |  |                                       |
| 1                          | Jhenaidah          | Training / workshop, for Environment Health & safety etc | Satisfactory          | Training completed by PMO                                | Satisfactory                          |
| 2                          | Narail             | Training / workshop, for Environment Health & safety etc | Satisfactory          | Training completed by PMO                                | Satisfactory                          |
| 3                          | Benapole           |  | Nil                   |  |                                       |
| 4                          | Satkhira           | Training / workshop, for Environment Health & safety etc | Satisfactory          | Training completed by PMO                                | Satisfactory                          |
| 5                          | Bagerhat           |  | Nil                   |  |                                       |
| <b>Rajshahi Division</b>   |                    |  |                       |  |                                       |
| 1                          | Thakugaon          |  | Nil                   |  |                                       |
| 2                          | Kurigram           | Training / workshop, for Environment Health & safety etc | Satisfactory          | Training completed by PMO                                | Satisfactory                          |
| 3                          | Rangpur            |  | Nil                   |  |                                       |
| 4                          | Dinajpur           | Training / workshop, for Environment Health & safety etc | Not yet started       |  |                                       |
| 5                          | Gaibandha          |  | Nil                   |  |                                       |
| 6                          | Natore             |  | Nil                   |  |                                       |
| 7                          | Sirajganj          |  | Nil                   |  |                                       |
| 8                          | Nachol             |  | Nil                   |  |                                       |
| <b>Barisal Division</b>    |                    |  |                       |  |                                       |
| 1                          | Jhalokati          | Training / workshop, for Environment Health & safety etc | Satisfactory          | Training completed by PMO                                | Satisfactory                          |
| 2                          | Bhola              | Training / workshop, for Environment Health & safety etc | Satisfactory          | Training completed by PMO                                | Satisfactory                          |
| 3                          | Barguna            | Training / workshop, for Environment Health & safety etc | Satisfactory          | Training completed by PMO                                | Satisfactory                          |
| 4                          | Kolapara           |  | Nil                   |  |                                       |



### E) Water Supply

L7) Water Supply

| SL No               | Name of Pourashava | Measure proposed in EMP                                  | EMP compliance status   | Remarks                   | EMP Health & safety Compliance status |
|---------------------|--------------------|--|-------------------------|---------------------------|---------------------------------------|
| Sylhet Division     |                    |  |                         |                           |                                       |
| 1                   | Sunamganj          | Training / workshop, for Environment Health & safety etc | Moderately satisfactory | Training completed by PMO | Moderately satisfactory               |
| 2                   | Srimangal          | Training / workshop, for Environment Health & safety etc | Satisfactory            | Training completed by PMO | Moderately satisfactory               |
| 3                   | Golapganj          | Training / workshop, for Environment Health & safety etc | Moderately satisfactory | Training completed by PMO | Moderately satisfactory               |
| Dhaka Division      |                    |  |                         |                           |                                       |
| 1                   | Sreepur            | Training / workshop, for Environment Health & safety etc | Moderately satisfactory | Training completed by PMO | Moderately satisfactory               |
| 2                   | Mirzapur           | Training / workshop, for Environment Health & safety etc | Moderately satisfactory | Training completed by PMO | Moderately satisfactory               |
| Chittagong Division |                    |  |                         |                           |                                       |
| 1                   | Parshuram          | Training / workshop, for Environment Health & safety etc | Moderately satisfactory | Training completed by PMO | Moderately satisfactory               |
| Khulna Division     |                    |  |                         |                           |                                       |
| 1                   | Satkhira           | Training / workshop, for Environment Health & safety etc | Satisfactory            | Training completed by PMO | Moderately satisfactory               |
| 2                   | Bagerhat           | Training / workshop, for Environment Health & safety etc | Satisfactory            | Training completed by PMO | Moderately satisfactory               |
| Rajshahi Division   |                    |  |                         |                           |                                       |
| 1                   | Rangpur            | Training / workshop, for Environment Health & safety etc | Nil                     | Nil                       | Nil                                   |
| 2                   | Nachol             | Training / workshop, for Environment Health & safety etc | Not yet started         |                           |                                       |
| Barisal Division    |                    |  |                         |                           |                                       |
| 1                   | Kolapara           | Training / workshop, for Environment Health & safety etc | Not yet started         |                           |                                       |

# **PHOTOPLATES**

---

## **KURIGRAM POURASHAVA**



View of drain under construction



View of drain under construction



View of drain under construction

## **PATGRAM POURASHAVA**



Proposed location of Bus Terminal



View of Proposed road



View of Proposed road



**Bhanga Pourashava:**



Survey team collecting Ambient Air Quality data



Survey team measuring noise at the proposed project site



Survey team collecting surface water sample



View of ongoing Kitchen Market under Construction

### Narail Pourashava:



Labours are working without any PPE.(PDP-25)



Labours are working without any PPE.(PDP-35)



Consultation with Labours.(PDP-35)